

# IMPDH2 Rabbit mAb

货号: **AYM28616**

## 产品信息

反应	Human,Mouse,Rat
宿主	Rabbit
克隆性	Monoclonal
预测反应	
应用	WB IHC IF/ICC IP FC
推荐浓度	<b>WB:</b> 1:500 - 1:2000 <b>IHC:</b> 1:50 - 1:200 <b>IF/ICC:</b> 1:50 - 1:200 <b>IP:</b> 1:20 - 1:50 <b>FC:</b> 1:20 - 1:50
理论分子量	55kDa
实测分子量	56kDa
形式	Liquid
保存条件	Store at -20°C. Avoid freeze / thaw cycles. Buffer: PBS with 0.75% BSA,50% glycerol,pH7.3.
偶联物	Unconjugated
阳性对照	HeLa,K-562,Mouse spleen,Rat spleen
细胞定位	Cytoplasm,Nucleus
纯化	Affinity purification

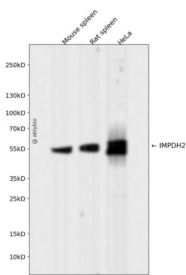
## 抗原信息

抗原信息	Recombinant fusion protein corresponding to Human IMPDH2.
序列	MADYLISGGTSYVPDDGLTAQQLFNCGDGLTYNDFLILPGYIDFTADQVDLTSALTKKITLKTPLVSSPMDTVTEAGMAIAMALTGGIGIFIIHNCTPEFQANEVRKVKKYEQGFITDPVVLSPKDRVRDVFEAKARHGFCGIPITDTGRMGSRVLGISSRDI DFLKEEEHDCFL EEIMTKREDLVVAPAGITLKEANEILQRSKKGKLPVNEDELVAIIARTDLKKNRDYPLASKDAKKQLLCG AAIGTHEDDKYRLDLLAQAGVDVVLDSSQGNSIFQINMIKIYKDKYPNLQVIGGNVVTAQAQKLNIDAGVDALRVGMGS GSICITQEV LACGRPQATAVYK VSEYARRFGVPVIADGGIQNVGHI AKALALGASTVMMGSLLAATTEAPGEYFFSDGIRLK KYRGMGSLDAMDKHLSSQNRYFSEADKIKVAQGVSGAVQDKGSIHKFVPYLIAGIQHSCQDIGAKSLTQVRAMMYSGEL KFEKRTSSAQVEGGVHLSHSYEKRLF

## 靶点信息

研究背景	This gene encodes the rate-limiting enzyme in the de novo guanine nucleotide biosynthesis. It is thus involved in maintaining cellular guanine deoxy- and ribonucleotide pools needed for DNA and RNA synthesis. The encoded protein catalyzes the NAD-dependent oxidation of inosine-5'-monophosphate into xanthine-5'-monophosphate, which is then converted into guanosine-5'-monophosphate. This gene is up-regulated in some neoplasms, suggesting it may play a role in malignant transformation.
基因ID	3615
基因名	IMPDH2
Swiss	P12268
别名	IMPDH2;IMPD2;IMPDH-II

## 产品验证



Western blot analysis of IMPDH2 expressed in Mouse spleen,Rat spleen,HeLa using IMPDH2 Rabbit mAb at 1:1000. Secondary antibody: HRP Goat Anti-Rabbit IgG (H+L) at 1:5000. Lysates/proteins: 30ug per lane. Blocking buffer: 5% non-fat dry milk in TBST. Detection: ECL Enhanced Kit. Exposure time: 120s.

## 实验步骤

访问官网浏览详情: [www.ablybio.cn](http://www.ablybio.cn)