

Transferrin Rabbit mAb

货号: **AYM28610**

产品信息

反应	Human,Mouse,Rat
宿主	Rabbit
克隆性	Monoclonal
预测反应	
应用	WB IHC IP
推荐浓度	WB: 1:500 - 1:2000 IHC: 1:50 - 1:200 IP: 1:20 - 1:50
理论分子量	77kDa
实测分子量	77kDa
形式	Liquid
保存条件	Store at -20°C. Avoid freeze / thaw cycles. Buffer: PBS with 0.75% BSA,50% glycerol,pH7.3.
偶联物	Unconjugated
阳性对照	HepG2,HUH-7,Human plasma,Mouse plasma,Rat plasma
细胞定位	Secreted
纯化	Affinity purification

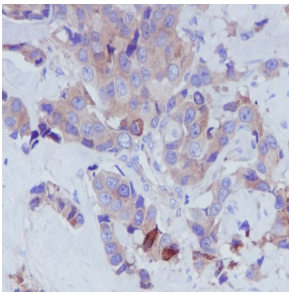
抗原信息

抗原信息	Recombinant fusion protein corresponding to Human Transferrin .
序列	TDECKPVKWCALSHHERLKCDEWSVNSVSGKIECVSAETTEDCIAKIMNGEADAMSLDGGFVYIAGKCGLVPVLAENYNKS DNCEDTPEAGYFAIAVVKKSASDLTWDNLKGGKSCHTAVGRTAGWNIPMGLLYNKINHCRFDEFFSEGCAPGSKKDSSL CKLCMGSGLNLCPEPNKEGYGYTGAFRCLVEKGDVAFVKHQTVPQNTGGKNPDPWAKNLNEKDYEELLCLDGRKPVVE YANCHLARAPNHAVVTRKDKEACVHKILRQQHFLFGSNVTDCSGNFCLFRSETKDLLFRDDTVCLAKLHDRNTYEKYLGE EYVKAVGNLRKCSTSSLLEACTFRFP

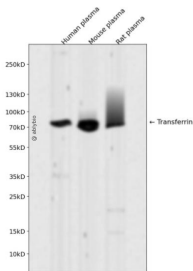
靶点信息

研究背景	This gene encodes a glycoprotein with an approximate molecular weight of 76.5 kDa. It is thought to have been created as a result of an ancient gene duplication event that led to generation of homologous C and N-terminal domains each of which binds one ion of ferric iron. The function of this protein is to transport iron from the intestine, reticuloendothelial system, and liver parenchymal cells to all proliferating cells in the body. This protein may also have a physiologic role as granulocyte/pollen-binding protein (GPBP) involved in the removal of certain organic matter and allergens from serum.
基因ID	7018
基因名	TF
Swiss	P02787
别名	HEL-S-71p;PRO1557;PRO2086;TFQTL1;TF;Transferrin

产品验证



Immunohistochemical analysis of paraffin-embedded Human breast carcinoma, using Transferrin Antibody.



Western blot analysis of Transferrin expressed in Human plasma, Mouse plasma, Rat plasma using Transferrin Rabbit mAb at 1:1000. Secondary antibody: HRP Goat Anti-Rabbit IgG (H+L) at 1:5000. Lysates/proteins: 30ug per lane. Blocking buffer: 5% non-fat dry milk in TBST. Detection: ECL Enhanced Kit. Exposure time: 120s.

实验步骤

访问官网浏览详情: www.ablybio.cn