

PTEN Rabbit mAb

货号: **AYM28603**

产品信息

反应	Human,Mouse,Rat
宿主	Rabbit
克隆性	Monoclonal
预测反应	
应用	WB IHC IF/ICC
推荐浓度	WB: 1:500 - 1:2000 IHC: 1:50 - 1:200 IF/ICC: 1:50 - 1:200
理论分子量	19kDa/47kDa/64kDa
实测分子量	54kDa
形式	Liquid
保存条件	Store at -20°C. Avoid freeze / thaw cycles. Buffer: PBS with 0.75% BSA,50% glycerol,pH7.3.
偶联物	Unconjugated
阳性对照	HeLa,NIH/3T3,C6
细胞定位	Cytoplasm,Nucleus,PML body,Secreted
纯化	Affinity purification

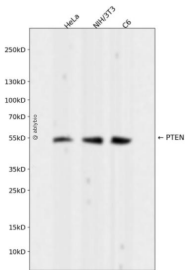
抗原信息

抗原信息	Recombinant fusion protein corresponding to Human PTEN.
------	---

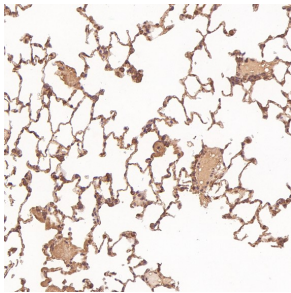
靶点信息

研究背景	This gene was identified as a tumor suppressor that is mutated in a large number of cancers at high frequency. The protein encoded by this gene is a phosphatidylinositol-3,4,5-trisphosphate 3-phosphatase. It contains a tensin like domain as well as a catalytic domain similar to that of the dual specificity protein tyrosine phosphatases. Unlike most of the protein tyrosine phosphatases, this protein preferentially dephosphorylates phosphoinositide substrates. It negatively regulates intracellular levels of phosphatidylinositol-3,4,5-trisphosphate in cells and functions as a tumor suppressor by negatively regulating AKT/PKB signaling pathway. The use of a non-canonical (CUG) upstream initiation site produces a longer isoform that initiates translation with a leucine, and is thought to be preferentially associated with the mitochondrial inner membrane. This longer isoform may help regulate energy metabolism in the mitochondria. A pseudogene of this gene is found on chromosome 9. Alternative splicing and the use of multiple translation start codons results in multiple transcript variants encoding different isoforms.
基因ID	5728
基因名	PTEN
Swiss	P60484
别名	PTEN

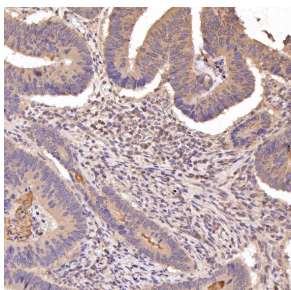
产品验证



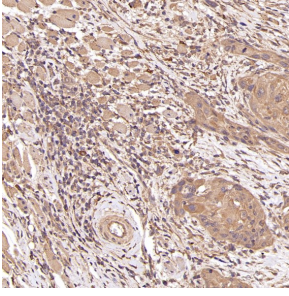
Western blot analysis of PTEN expressed in HeLa, NIH/3T3, C6 using PTEN Rabbit mAb at 1:1000. Secondary antibody: HRP Goat Anti-Rabbit IgG (H+L) at 1:5000. Lysates/proteins: 30ug per lane. Blocking buffer: 5% non-fat dry milk in TBST. Detection: ECL Enhanced Kit. Exposure time: 120s.



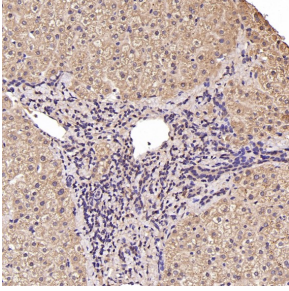
Immunohistochemical analysis of paraffin-embedded Rat lung, using the Antibody at 1:100 dilution.



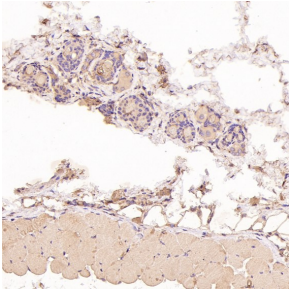
Immunohistochemical analysis of paraffin-embedded Human colon cancer, using the Antibody at 1:100 dilution.



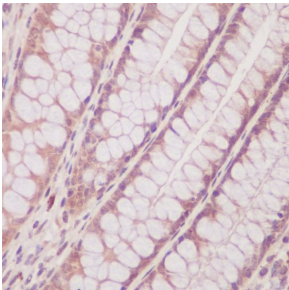
Immunohistochemical analysis of paraffin-embedded Human tongue cancer, using the Antibody at 1:100 dilution.



Immunohistochemical analysis of paraffin-embedded Human liver, using the Antibody at 1:100 dilution.



Immunohistochemical analysis of paraffin-embedded Mouse skin, using the Antibody at 1:100 dilution.



Immunohistochemical analysis of paraffin-embedded human colon, using PTEN Antibody.

实验步骤

访问官网浏览详情: www.ablybio.cn