

# SERPING1 Rabbit mAb

货号: **AYM28575**

## 产品信息

反应	Human,Mouse,Rat
宿主	Rabbit
克隆性	Monoclonal
预测反应	
应用	WB IP
推荐浓度	<b>WB:</b> 1:500 - 1:2000 <b>IP:</b> 1:20 - 1:50
理论分子量	49kDa/55kDa
实测分子量	100kDa
形式	Liquid
保存条件	Store at -20°C. Avoid freeze / thaw cycles. Buffer: PBS with 0.75% BSA,50% glycerol,pH7.3.
偶联物	Unconjugated
阳性对照	Human plasma
细胞定位	Secreted
纯化	Affinity purification

## 抗原信息

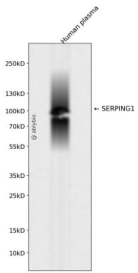
抗原信息	Recombinant fusion protein corresponding to Human SERPING1.
序列	KDFTCVHQALKGFTTKGVTSVSQIFHSPDLAIRDTFVNASRTLYSSSPRVLNSNSDANLELINTWVAKNTNNKISRLLD SDTRLVLLNAIYLSAKWKTTFDPKKTRMEPFHFKNSVIKVPMMNSKKYPVAHFIDQTLKAKVGQLQLSHNLSLVLPQNLK HRLDMEQALSPSVFKAIMKLEMSKFQPTLLTLPRIKVTTSDMLSIMEKLEFFDFSYDLNLCGLTEDPDLQVSAMQHQT VLELTETGVEAAAASISVARTLLVFEVQQPFLFVLWDQQHKFPVFMGRVYDPRA

## 靶点信息

研究背景	This gene encodes a highly glycosylated plasma protein involved in the regulation of the complement cascade. Its protein inhibits activated C1r and C1s of the first complement component and thus regulates complement activation. Deficiency of this protein is associated with hereditary angioneurotic oedema (HANE). Alternative splicing results in multiple transcript variants encoding the same isoform.
------	---

基因ID	710
基因名	SERPING1
Swiss	P05155
别名	SERPING1;C1IN;C1INH;C1NH;HAE1;HAE2

## 产品验证



Western blot analysis of SERPING1 expressed in Human plasma using SERPING1 Rabbit mAb at 1:1000. Secondary antibody: HRP Goat Anti-Rabbit IgG (H+L) at 1:5000. Lysates/proteins: 30ug per lane. Blocking buffer: 5% non-fat dry milk in TBST. Detection: ECL Enhanced Kit. Exposure time: 120s.

## 实验步骤

访问官网浏览详情: [www.ablybio.cn](http://www.ablybio.cn)