

AKT1/2/3 Rabbit mAb

货号: **AYM28573**

产品信息

反应	Human,Mouse,Rat
宿主	Rabbit
克隆性	Monoclonal
预测反应	
应用	WB IHC IF/ICC IP FC
推荐浓度	WB: 1:500 - 1:2000 IHC: 1:50 - 1:200 IF/ICC: 1:50 - 1:200 IP: 1:20 - 1:50 FC: 1:20 - 1:50
理论分子量	48kDa/55kDa/51kDa/54kDa
实测分子量	56kDa
形式	Liquid
保存条件	Store at -20°C. Avoid freeze / thaw cycles. Buffer: PBS with 0.75% BSA,50% glycerol,pH7.3.
偶联物	Unconjugated
阳性对照	MCF7,Mouse brain,Rat brain
细胞定位	ciliary basal body,cytoplasm,cytosol,microtubule cytoskeleton,mitochondrion,nucleoplasm,nucleus,plasma membrane,spindle
纯化	Affinity purification

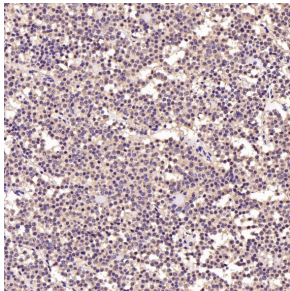
抗原信息

抗原信息	Recombinant fusion protein corresponding to Human AKT1/2/3 .
序列	GTPEYLAPVLEDNDYGRAVDWWGLGVVMMYEMMCGRLPFYNDHEKLFELLMEEIRFPRTLGPPEAKSLLSGLLKKDPKQ RLGGGSEDAKEIMQHRFFAGIVWQHVYEKKLSPPFKPQVTSQTDTRYFDEEFTAQMITITPPDQDDSMCEVDSERRPHFP QFSYSASGTA

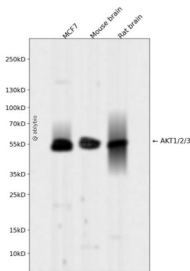
靶点信息

研究背景	Human AKT serine-threonine protein kinase family includes three members AKT1,AKT2, AKT3, which are also often referred to as protein kinase B alpha, beta, and gamma. These highly similar AKT proteins all have an N-terminal pleckstrin homology domain, a serine/threonine-specific kinase domain and a C-terminal regulatory domain. These proteins are phosphorylated by phosphoinositide 3-kinase (PI3K). AKT/PI3K forms a key component of many signalling pathways that involve the binding of membrane-bound ligands such as receptor tyrosine kinases, G-protein coupled receptors, and integrin-linked kinase. These AKT proteins therefore regulate a wide variety of cellular functions including cell proliferation, survival, metabolism, and angiogenesis in both normal and malignant cells. AKT proteins are recruited to the cell membrane by phosphatidylinositol 3,4,5-trisphosphate (PIP3) after phosphorylation of phosphatidylinositol 4,5-bisphosphate (PIP2) by PI3K. Subsequent phosphorylation of both threonine residue 308 and serine residue 473 is required for full activation of the AKT1 protein encoded by this gene.
基因ID	207,208,10000
基因名	AKT1,AKT2,AKT3
Swiss	P31749/P31751/Q9Y243
别名	AKT1/AKT2/AKT3

产品验证



Immunohistochemical analysis of paraffin-embedded Human pituitary tumor, using the Antibody at 1:250 dilution.



Western blot analysis of AKT1/2/3 expressed in MCF7, Mouse brain, Rat brain using AKT1/2/3 Rabbit mAb at 1:1000. Secondary antibody: HRP Goat Anti-Rabbit IgG (H+L) at 1:5000. Lysates/proteins: 30ug per lane. Blocking buffer: 5% non-fat dry milk in TBST. Detection: ECL Enhanced Kit. Exposure time: 120s.

实验步骤

访问官网浏览详情: www.ablybio.cn