

# Klotho Rabbit mAb

货号: **AYM28571**

## 产品信息

反应	Human,Mouse
宿主	Rabbit
克隆性	Monoclonal
预测反应	
应用	WB IHC
推荐浓度	<b>WB:</b> 1:500 - 1:2000 <b>IHC:</b> 1:50 - 1:200
理论分子量	62kDa/116kDa
实测分子量	62kDa
形式	Liquid
保存条件	Store at -20°C. Avoid freeze / thaw cycles. Buffer: PBS with 0.75% BSA,50% glycerol,pH7.3.
偶联物	Unconjugated
阳性对照	DU145,Mouse kidney,Mouse brain,Rat kidney
细胞定位	Cell membrane,Secreted,Single-pass type I membrane protein
纯化	Affinity purification

## 抗原信息

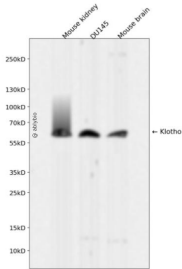
抗原信息	Recombinant fusion protein corresponding to Human Klotho.
序列	MPASAPRRRPPPPSLSLLLVLLGLGRRRLRAEPGDGAQTWARFSPAPPEAAGLFQGTFFPDGFLWAVGSAAYQTEGG WQHQHGKGASIWDTFTHHPLAPPGDSRNASLPLGAPSPLQPATGDVASDSYNNVFRDTEALRELGVTYRFSISWARVLP NGSAGVPNREGLRYRLLERLRELGVQPVVVTLYHWDLPQRL

## 靶点信息

研究背景	This gene encodes a type-I membrane protein that is related to beta-glucosidases. Reduced production of this protein has been observed in patients with chronic renal failure (CRF), and this may be one of the factors underlying the degenerative processes (e.g., arteriosclerosis, osteoporosis, and skin atrophy) seen in CRF. Also, mutations within this protein have been associated with ageing and bone loss.
基因ID	9365

基因名	KL
Swiss	Q9UEF7
别名	KL;klotho

## 产品验证



Western blot analysis of Klotho expressed in Mouse kidney,DU145,Mouse brain using Klotho Rabbit mAb at 1:1000. Secondary antibody: HRP Goat Anti-Rabbit IgG (H+L) at 1:5000. Lysates/proteins: 30ug per lane. Blocking buffer: 5% non-fat dry milk in TBST. Detection: ECL Enhanced Kit. Exposure time: 120s.

## 实验步骤

访问官网浏览详情: [www.ablybio.cn](http://www.ablybio.cn)