

# LIMPII Rabbit mAb

货号: **AYM28568**

## 产品信息

反应	Human,Mouse,Rat
宿主	Rabbit
克隆性	Monoclonal
预测反应	
应用	WB IHC IP FC
推荐浓度	<b>WB:</b> 1:500 - 1:2000 <b>IHC:</b> 1:50 - 1:200 <b>IP:</b> 1:20 - 1:50 <b>FC:</b> 1:20 - 1:50
理论分子量	37kDa/54kDa
实测分子量	77kDa
形式	Liquid
保存条件	Store at -20°C. Avoid freeze / thaw cycles. Buffer: PBS with 0.75% BSA,50% glycerol,pH7.3.
偶联物	Unconjugated
阳性对照	HeLa,HepG2,Mouse heart,Mouse Lung,Mouse Liver,Rat Lung
细胞定位	Lysosome membrane,Multi-pass membrane protein
纯化	Affinity purification

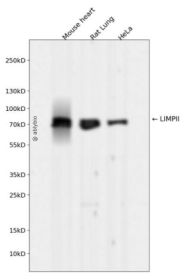
## 抗原信息

抗原信息	Recombinant fusion protein corresponding to Human LIMPII.
序列	GLFYEKNGTNDGDYVFLTGEDSYLNFTKIVEWNGKTSLDWWITDKCNMINGTDGDSFHPLITKDEVLYVFPSPDFCRSVYI TFSDYESVQGLPAFRYKVP AEILANTSDNAGFCIPEGNCLGSGVLNVSICKNGAPIIMSFPHFYQADERFVSAIEGMHPNQE DHETFVDINPLTGIIKAA

## 靶点信息

研究背景	The protein encoded by this gene is a type III glycoprotein that is located primarily in limiting membranes of lysosomes and endosomes. Earlier studies in mice and rat suggested that this protein may participate in membrane transportation and the reorganization of endosomal/lysosomal compartment. The protein deficiency in mice was reported to impair cell membrane transport processes and cause pelvic junction obstruction, deafness, and peripheral neuropathy. Further studies in human showed that this protein is a ubiquitously expressed protein and that it is involved in the pathogenesis of HFMD (hand, foot, and mouth disease) caused by enterovirus-71 and possibly by coxsackievirus A16. Mutations in this gene caused an autosomal recessive progressive myoclonic epilepsy-4 (EPM4), also known as action myoclonus-renal failure syndrome (AMRF). Alternatively spliced transcript variants encoding different isoforms have been found for this gene.
基因ID	950
基因名	SCARB2
Swiss	Q14108
别名	SCARB2;AMRF;CD36L2;EPM4;HLGP85;LGP85;LIMP-2;LIMP2;SR-BII

## 产品验证



Western blot analysis of LIMPII expressed in Mouse heart,Rat Lung,HeLa using LIMPII Rabbit mAb at 1:1000. Secondary antibody: HRP Goat Anti-Rabbit IgG (H+L) at 1:5000. Lysates/proteins: 30ug per lane. Blocking buffer: 5% non-fat dry milk in TBST. Detection: ECL Enhanced Kit. Exposure time: 120s.

## 实验步骤

访问官网浏览详情: [www.ablybio.cn](http://www.ablybio.cn)