

alpha 1 Antichymotrypsin Rabbit mAb

货号: **AYM28564**

产品信息

反应	Human
宿主	Rabbit
克隆性	Monoclonal
预测反应	
应用	WB IHC IF/ICC IP
推荐浓度	WB: 1:500 - 1:2000 IHC: 1:50 - 1:200 IF/ICC: 1:50 - 1:200 IP: 1:20 - 1:50
理论分子量	10kDa/24kDa/47kDa
实测分子量	50-70kDa
形式	Liquid
保存条件	Store at -20°C. Avoid freeze / thaw cycles. Buffer: PBS with 0.75% BSA,50% glycerol,pH7.3.
偶联物	Unconjugated
阳性对照	Human plasma
细胞定位	Secreted
纯化	Affinity purification

抗原信息

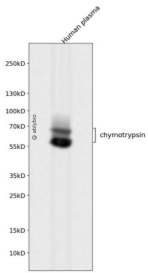
抗原信息	Recombinant fusion protein corresponding to Human alpha 1 Antichymotrypsin .
序列	MERMLPLLALGLLAAGFCPAVLCHPN SPLDEENLTQENQDRGTHVDLGLASANVDFAFSLYKQLVLKAPDKNVIFSP LSIST ALAFSLG AHNTTLTEIL

靶点信息

研究背景	The protein encoded by this gene is a plasma protease inhibitor and member of the serine protease inhibitor class. Polymorphisms in this protein appear to be tissue specific and influence protease targeting. Variations in this protein's sequence have been implicated in Alzheimer's disease, and deficiency of this protein has been associated with liver disease. Mutations have been identified in patients with Parkinson disease and chronic obstructive pulmonary disease.
------	--

基因ID	12
基因名	SERPINA3
Swiss	P01011
别名	SERPINA3;AACT;ACT;GIG24;GIG25

产品验证



Western blot analysis of chymotrypsin expressed in Human plasma using alpha 1 Antichymotrypsin Rabbit mAb at 1:1000. Secondary antibody: HRP Goat Anti-Rabbit IgG (H+L) at 1:5000. Lysates/proteins: 30ug per lane. Blocking buffer: 5% non-fat dry milk in TBST. Detection: ECL Enhanced Kit. Exposure time: 120s.

实验步骤

访问官网浏览详情: www.ablybio.cn