

LIN28 Rabbit mAb

货号: **AYM28560**

产品信息

反应	Human
宿主	Rabbit
克隆性	Monoclonal
预测反应	
应用	WB IHC IF/ICC IP FC
推荐浓度	WB: 1:500 - 1:2000 IHC: 1:50 - 1:200 IF/ICC: 1:50 - 1:200 IP: 1:20 - 1:50 FC: 1:20 - 1:50
理论分子量	22kDa
实测分子量	28kDa
形式	Liquid
保存条件	Store at -20°C. Avoid freeze / thaw cycles. Buffer: PBS with 0.75% BSA,50% glycerol,pH7.3.
偶联物	Unconjugated
阳性对照	T47D
细胞定位	Cytoplasm,Nucleus,nucleolus
纯化	Affinity purification

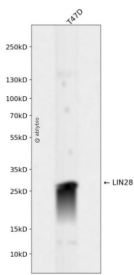
抗原信息

抗原信息	Recombinant fusion protein corresponding to Human LIN28.
序列	SAKGLESIRVTGPGGVFCIGSERRPKGKSMQKRRSKGDRYNCGGLDHHAKECKLPPQPKKCHFCQSISHMVASCPLKA QQGPSAQQKPTYFREEEEEIHSPTLLPEAQN

靶点信息

研究背景	This gene encodes a LIN-28 family RNA-binding protein that acts as a posttranscriptional regulator of genes involved in developmental timing and self-renewal in embryonic stem cells. The encoded protein functions through direct interaction with target mRNAs and by disrupting the maturation of certain miRNAs involved in embryonic development. This protein prevents the terminal processing of the LET7 family of microRNAs which are major regulators of cellular growth and differentiation. Aberrant expression of this gene is associated with cancer progression in multiple tissues.
基因ID	79727
基因名	LIN28A
Swiss	Q9H9Z2
别名	LIN28A;CSDD1;LIN-28;LIN28;ZCCHC1;lin-28A

产品验证



Western blot analysis of LIN28 expressed in T47D using LIN28 Rabbit mAb at 1:1000. Secondary antibody: HRP Goat Anti-Rabbit IgG (H+L) at 1:5000. Lysates/proteins: 30ug per lane. Blocking buffer: 5% non-fat dry milk in TBST. Detection: ECL Enhanced Kit. Exposure time: 120s.

实验步骤

访问官网浏览详情: www.ablybio.cn