

Ki67 Rabbit mAb

货号: **AYM28559**

产品信息

反应	Human
宿主	Rabbit
克隆性	Monoclonal
预测反应	
应用	WB IHC IF/ICC
推荐浓度	WB: 1:500 - 1:2000 IHC: 1:50 - 1:200 IF/ICC: 1:50 - 1:200
理论分子量	319kDa/358kDa
实测分子量	359kDa
形式	Liquid
保存条件	Store at -20°C. Avoid freeze / thaw cycles. Buffer: PBS with 0.75% BSA,50% glycerol,pH7.3.
偶联物	Unconjugated
阳性对照	22Rv1,Raji
细胞定位	Chromosome,Nucleus,nucleolus
纯化	Affinity purification

抗原信息

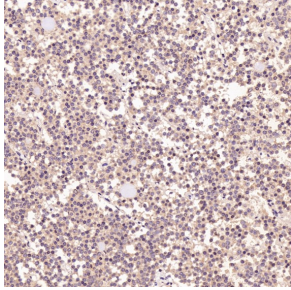
抗原信息	Recombinant fusion protein corresponding to Human Ki67 .
序列	GDGKSIRTFKESPKQILDPAARVTGMKKWPRTPKEEAQSLEDLAGFKELFQTPGPSEESMTDEKTTKIACKSPPPEVDTP TSTKQWPKRSLRKADVVEEF

靶点信息

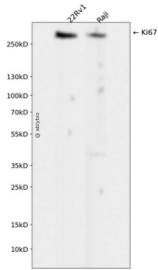
研究背景	This gene encodes a nuclear protein that is associated with and may be necessary for cellular proliferation. Alternatively spliced transcript variants have been described. A related pseudogene exists on chromosome X.
基因ID	4288

基因名	MKI67
Swiss	P46013
别名	MKI67;KIA;MIB-;MIB-1;PPP1R105;marker of proliferation Ki-67;Ki67

产品验证



Immunohistochemical analysis of paraffin-embedded Human pituitary tumor, using the Antibody at 1:3000 dilution.



Western blot analysis of Ki67 expressed in 22Rv1,Raji using Ki67 Rabbit mAb at 1:1000. Secondary antibody: HRP Goat Anti-Rabbit IgG (H+L) at 1:5000. Lysates/proteins: 30ug per lane. Blocking buffer: 5% non-fat dry milk in TBST. Detection: ECL Enhanced Kit. Exposure time: 120s.

实验步骤

访问官网浏览详情: www.ablybio.cn