

CD46 Rabbit mAb

货号: **AYM28536**

产品信息

反应	Human
宿主	Rabbit
克隆性	Monoclonal
预测反应	
应用	WB IHC ICC
推荐浓度	WB: 1:500 - 1:2000 IHC: 1:50 - 1:200 ICC: 1:50 - 1:200
理论分子量	36kDa/39kDa/40kDa/41kDa/42kDa/43kDa/44kDa
实测分子量	44kDa
形式	Liquid
保存条件	Store at -20°C. Avoid freeze / thaw cycles. Buffer: PBS with 0.75% BSA,50% glycerol,pH7.3.
偶联物	Unconjugated
阳性对照	HeLa,A-549,MCF7
细胞定位	Cytoplasmic vesicle,Single-pass type I membrane protein,acrosome inner membrane,secretory vesicle
纯化	Affinity purification

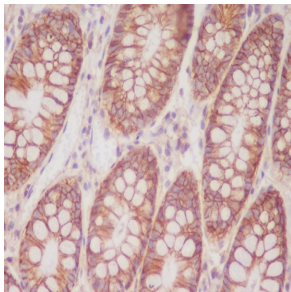
抗原信息

抗原信息	Recombinant fusion protein corresponding to Human CD46.
序列	TFEAMELIGKPKPYEIGERVDYKCKKGYFYIPPLATHTICDRNHTWLPVSDDACYRETCPIYIRDPLNGQAVPANGTYEFGY QMHFICNEGYYLIGEEILYCEKGSVAIWSGKPPICEKVLCTPPPKIKNGKHTFSEVEVFEYLDVITYSCDPAPGDPFSLIGE STIYCGDNSVWSRAAPECKVVKCRFPVVENGKQISGFGKKFYKATVMFECDKGFYLDGSDTIVCDSNSTWDPPVPKCLK VSTSSTTKSPASSASGPRPTYKPPVSNYPGYPKPE

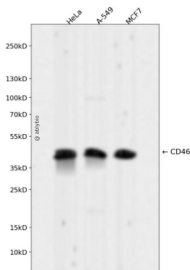
靶点信息

研究背景	The protein encoded by this gene is a type I membrane protein and is a regulatory part of the complement system. The encoded protein has cofactor activity for inactivation of complement components C3b and C4b by serum factor I, which protects the host cell from damage by complement. In addition, the encoded protein can act as a receptor for the Edmonston strain of measles virus, human herpesvirus-6, and type IV pili of pathogenic Neisseria. Finally, the protein encoded by this gene may be involved in the fusion of the spermatozoa with the oocyte during fertilization. Mutations at this locus have been associated with susceptibility to hemolytic uremic syndrome. Alternatively spliced transcript variants encoding different isoforms have been described.
基因ID	4179
基因名	CD46
Swiss	P15529
别名	AHUS2;MCP;MIC10;TLX;TRA2.10;CD46

产品验证



Immunohistochemical analysis of paraffin-embedded human colon, using CD46 Antibody.



Western blot analysis of CD46 expressed in HeLa, A-549, MCF7 using CD46 Rabbit mAb at 1:1000. Secondary antibody: HRP Goat Anti-Rabbit IgG (H+L) at 1:5000. Lysates/proteins: 30ug per lane. Blocking buffer: 5% non-fat dry milk in TBST. Detection: ECL Enhanced Kit. Exposure time: 120s.

实验步骤

访问官网浏览详情: www.ablybio.cn