

# SLAMF1 Rabbit mAb

货号: **AYM28535**

## 产品信息

反应	Human
宿主	Rabbit
克隆性	Monoclonal
预测反应	
应用	WB IP FC
推荐浓度	<b>WB:</b> 1:500 - 1:2000 <b>IP:</b> 1:20 - 1:50 <b>FC:</b> 1:20 - 1:50
理论分子量	33kDa/37kDa/40kDa
实测分子量	85kDa
形式	Liquid
保存条件	Store at -20°C. Avoid freeze / thaw cycles. Buffer: PBS with 0.75% BSA,50% glycerol,pH7.3.
偶联物	Unconjugated
阳性对照	Jurkat,Mouse liver
细胞定位	Cell membrane,Single-pass type I membrane protein
纯化	Affinity purification

## 抗原信息

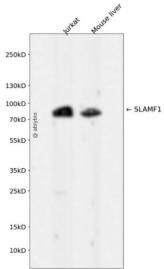
抗原信息	Recombinant fusion protein corresponding to Human SLAMF1.
序列	ASYGTGGRMMNCPKILRQLGSKVLLPLTYERINKSMNKSIHIVVTMAKLENSVENKIVSLDPSEAGPPRYLGDRYKFYLENL TLGIRESRKEDEGWYLMTLEKNVSVQRFLQLRQVSTPEIKVLNKTQENGTCTLILGCTVEKGDHVAYSWSEKAGTHP LNPANSSHLLSLTLPQHADNIYICTVSNPISNNSQTFSPWPGCRTPSETKP

## 靶点信息

研究背景	SLAM-induced signal-transduction events in T-lymphocytes are different from those in B-cells. Two modes ofSLAM signaling are likely to exist: one in which the inhibitor SH2D1A acts as a negative regulator and a another inwhich protein-tyrosine phosphatase 2C (PTPN11)-dependent signal transduction operates.
基因ID	6504

基因名	SLAMF1
Swiss	Q13291
别名	SLAMF1;CD150;CDw150;SLAM

## 产品验证



Western blot analysis of SLAMF1 expressed in Jurkat, Mouse liver using SLAMF1 Rabbit mAb at 1:1000. Secondary antibody: HRP Goat Anti-Rabbit IgG (H+L) at 1:5000. Lysates/proteins: 30ug per lane. Blocking buffer: 5% non-fat dry milk in TBST. Detection: ECL Enhanced Kit. Exposure time: 120s.

## 实验步骤

访问官网浏览详情: [www.ablybio.cn](http://www.ablybio.cn)