

MDH1 Rabbit mAb

货号: **AYM28521**

产品信息

反应	Human,Mouse,Rat
宿主	Rabbit
克隆性	Monoclonal
预测反应	
应用	WB IF/ICC IP FC
推荐浓度	WB: 1:500 - 1:2000 IF/ICC: 1:50 - 1:200 IP: 1:20 - 1:50 FC: 1:20 - 1:50
理论分子量	27kDa/36kDa/38kDa
实测分子量	36kDa
形式	Liquid
保存条件	Store at -20°C. Avoid freeze / thaw cycles. Buffer: PBS with 0.75% BSA,50% glycerol,pH7.3.
偶联物	Unconjugated
阳性对照	HepG2,THP-1,HeLa,Jurkat,Mouse liver,Mouse kidney,Mouse heart,Mouse eye,Rat kidney
细胞定位	Cytoplasm
纯化	Affinity purification

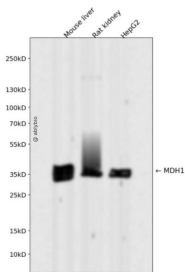
抗原信息

抗原信息	Recombinant fusion protein corresponding to Human MDH1.
序列	MSEPIRVLVTGAAGQIAYSLLYSIGNGSVFGKDQPIILVLLDITPMMGVLDGVLMEQLDCALPLLKDVIATDKEDVAFKDLDD VAILVGSMPRREGMERKDLLKANVKIFKSQGAALDKYAKKSVKVIIVGNPANTNCLTASKSAPSIPKENFSLTRLDHNRK AQIALKLGVTANDVKNVWGNHSSTQYPDVNHAKVKLQKGEVGVYEALKDDSWLKGEFVTTVQQRGA AVIKARKLSSA MSAAKAICDHVRDIWFGTPEGEFVSMGVISDGNSYGVPPDLLYSFPVVIKNTWKVFEGLPINDFSREKMDLTAKELTEEK ESAFEFLSSA

靶点信息

研究背景	This gene encodes an enzyme that catalyzes the NAD/NADH-dependent, reversible oxidation of malate to oxaloacetate in many metabolic pathways, including the citric acid cycle. Two main isozymes are known to exist in eukaryotic cells: one is found in the mitochondrial matrix and the other in the cytoplasm. This gene encodes the cytosolic isozyme, which plays a key role in the malate-aspartate shuttle that allows malate to pass through the mitochondrial membrane to be transformed into oxaloacetate for further cellular processes. Alternatively spliced transcript variants have been found for this gene. A recent study showed that a C-terminally extended isoform is produced by use of an alternative in-frame translation termination codon via a stop codon readthrough mechanism, and that this isoform is localized in the peroxisomes. Pseudogenes have been identified on chromosomes X and 6.
基因ID	4190
基因名	MDH1
Swiss	P40925
别名	MDH1;HEL-S-32;MDH-s;MDHA;MGC:1375;MOR2

产品验证



Western blot analysis of MDH1 expressed in Mouse liver, Rat kidney, HepG2 using MDH1 Rabbit mAb at 1:1000. Secondary antibody: HRP Goat Anti-Rabbit IgG (H+L) at 1:5000. Lysates/proteins: 30ug per lane. Blocking buffer: 5% non-fat dry milk in TBST. Detection: ECL Enhanced Kit. Exposure time: 120s.

实验步骤

访问官网浏览详情: www.ablybio.cn