

CD31 Rabbit mAb

货号: **AYM28520**

产品信息

反应	Human
宿主	Rabbit
克隆性	Monoclonal
预测反应	
应用	WB IHC IP FC
推荐浓度	WB: 1:500 - 1:2000 IHC: 1:50 - 1:200 IP: 1:20 - 1:50 FC: 1:20 - 1:50
理论分子量	79kDa/80kDa/81kDa/82kDa
实测分子量	125kDa
形式	Liquid
保存条件	Store at -20°C. Avoid freeze / thaw cycles. Buffer: PBS with 0.75% BSA, 50% glycerol, pH7.3.
偶联物	Unconjugated
阳性对照	THP-1, Mouse lung, Mouse spleen, Mouse heart
细胞定位	Cell junction, Cell junction, Cell membrane, Lipid-anchor, Single-pass type I membrane protein
纯化	Affinity purification

抗原信息

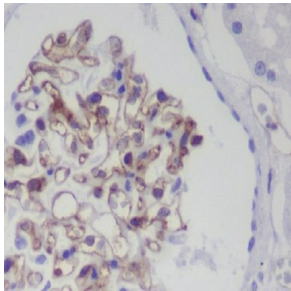
抗原信息	Recombinant fusion protein corresponding to Human CD31.
序列	SNATQAFWTKQKASKEQEGEYYCTAFNRRANHASSVPRSKILTVRVILAPWKKGLIAVVIIGVIIALLIIAAKCYFLRKAKAKQM PVEMSRPAVPLLNSNNE

靶点信息

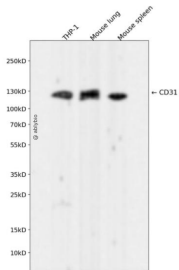
研究背景	The protein encoded by this gene is found on the surface of platelets, monocytes, neutrophils, and some types of T-cells, and makes up a large portion of endothelial cell intercellular junctions. The encoded protein is a member of the immunoglobulin superfamily and is likely involved in leukocyte migration, angiogenesis, and integrin activation.
------	---

基因ID	5175
基因名	PECAM1
Swiss	P16284
别名	PECAM1;CD31;CD31/EndoCAM;GPIIA;PECA1;PECAM-1;endoCAM

产品验证



Immunohistochemical analysis of paraffin-embedded human kidney, using CD31 Antibody.



Western blot analysis of CD31 expressed in THP-1, Mouse lung, Mouse spleen using CD31 Rabbit mAb at 1:1000. Secondary antibody: HRP Goat Anti-Rabbit IgG (H+L) at 1:5000. Lysates/proteins: 30ug per lane. Blocking buffer: 5% non-fat dry milk in TBST. Detection: ECL Enhanced Kit. Exposure time: 120s.

实验步骤

访问官网浏览详情: www.ablybio.cn