

# GCLM Rabbit mAb

货号: **AYM28517**

## 产品信息

反应	Human,Mouse,Rat
宿主	Rabbit
克隆性	Monoclonal
预测反应	
应用	WB IHC IP
推荐浓度	<b>WB:</b> 1:500 - 1:2000 <b>IHC:</b> 1:50 - 1:200 <b>IP:</b> 1:20 - 1:50
理论分子量	28kDa/30kDa
实测分子量	28kDa
形式	Liquid
保存条件	Store at -20°C. Avoid freeze / thaw cycles. Buffer: PBS with 0.75% BSA,50% glycerol,pH7.3.
偶联物	Unconjugated
阳性对照	HeLa,Mouse liver,Mouse spleen,Mouse kidney,Rat kidney
细胞定位	cytosol,glutamate-cysteine ligase complex
纯化	Affinity purification

## 抗原信息

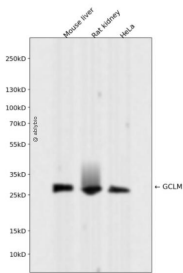
抗原信息	Recombinant fusion protein corresponding to Human GCLM.
序列	AQLDSVIIASPIEDGVNLSLEHLQPYWEELENLVQSKKIVAIGTSDLTKTQLEQLYQWAQVKPNSNQVNLASCCVMPPDL TAFKQFDIQLLTHNDPKELLSEASFQEALQESIPDIQAHEWVPLWLLRYSVIVKSRGIIKSKGYILQAKRRGS

## 靶点信息

研究背景	Glutamate-cysteine ligase, also known as gamma-glutamylcysteine synthetase, is the first rate limiting enzyme of glutathione synthesis. The enzyme consists of two subunits, a heavy catalytic subunit and a light regulatory subunit. Gamma glutamylcysteine synthetase deficiency has been implicated in some forms of hemolytic anemia. Alternative splicing results in multiple transcript variants encoding different isoforms.
------	--

基因ID	2730
基因名	GCLM
Swiss	P48507
别名	GCLM;GLCLR

## 产品验证



Western blot analysis of GCLM expressed in Mouse liver, Rat kidney, HeLa using GCLM Rabbit mAb at 1:1000. Secondary antibody: HRP Goat Anti-Rabbit IgG (H+L) at 1:5000. Lysates/proteins: 30ug per lane. B locking buffer: 5% non-fat dry milk in TBST. Detection: ECL Enhanced Kit. Exposure time: 120s.

## 实验步骤

访问官网浏览详情: [www.ablybio.cn](http://www.ablybio.cn)