

BIN1 Rabbit mAb

货号: **AYM28516**

产品信息

反应	Human
宿主	Rabbit
克隆性	Monoclonal
预测反应	
应用	WB IHC IF/ICC IP
推荐浓度	WB: 1:500 - 1:2000 IHC: 1:50 - 1:200 IF/ICC: 1:50 - 1:200 IP: 1:20 - 1:50
理论分子量	45-64kDa
实测分子量	50,60,65kDa
形式	Liquid
保存条件	Store at -20°C. Avoid freeze / thaw cycles. Buffer: PBS with 0.75% BSA,50% glycerol,pH7.3.
偶联物	Unconjugated
阳性对照	Jurkat,HeLa
细胞定位	Cytoplasm,Nucleus
纯化	Affinity purification

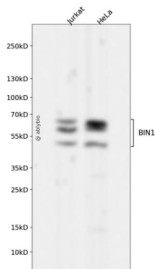
抗原信息

抗原信息	Recombinant fusion protein corresponding to Human BIN1.
序列	QNLNDVLVGLKQHGSENTFTVKAQPSDNAPAKGNKSPSPDGGSPAATPEIRVNHEPEPAGGATPGATLPKSPSQSSLPAV VVETFPATVNGTVEGGSGAGRLDLPFGFMFKVQAQHDYATDTDELQLKAGDVVLVIFQNPPEEQDEGWLMGVKESD WNQHKLEKCRGVFPENFTERVP

靶点信息

研究背景	This gene encodes several isoforms of a nucleocytoplasmic adaptor protein, one of which was initially identified as a MYC-interacting protein with features of a tumor suppressor. Isoforms that are expressed in the central nervous system may be involved in synaptic vesicle endocytosis and may interact with dynamin, synaptojanin, endophilin, and clathrin. Isoforms that are expressed in muscle and ubiquitously expressed isoforms localize to the cytoplasm and nucleus and activate a caspase-independent apoptotic process. Studies in mouse suggest that this gene plays an important role in cardiac muscle development. Alternate splicing of the gene results in several transcript variants encoding different isoforms. Aberrant splice variants expressed in tumor cell lines have also been described.
基因ID	274
基因名	BIN1
Swiss	O00499
别名	BIN1;AMPH2;AMPHL;SH3P9

产品验证



Western blot analysis of BIN1 expressed in Jurkat, HeLa using BIN1 Rabbit mAb at 1:1000. Secondary antibody: HRP Goat Anti-Rabbit IgG (H+L) at 1:5000. Lysates/proteins: 30ug per lane. Blocking buffer: 5% non-fat dry milk in TBST. Detection: ECL Enhanced Kit. Exposure time: 120s.

实验步骤

访问官网浏览详情: www.ablybio.cn