

ELMO1 Rabbit mAb

货号: **AYM28508**

产品信息

反应	Human,Mouse,Rat
宿主	Rabbit
克隆性	Monoclonal
预测反应	
应用	WB IF/ICC IP FC
推荐浓度	WB: 1:500 - 1:2000 IF/ICC: 1:50 - 1:200 IP: 1:20 - 1:50 FC: 1:20 - 1:50
理论分子量	84kDa
实测分子量	84kDa
形式	Liquid
保存条件	Store at -20°C. Avoid freeze / thaw cycles. Buffer: PBS with 0.75% BSA,50% glycerol,pH7.3.
偶联物	Unconjugated
阳性对照	Raji,SH-SY5Y,Mouse lung,Mouse brain,Rat brain
细胞定位	Cell membrane,Cytoplasm
纯化	Affinity purification

抗原信息

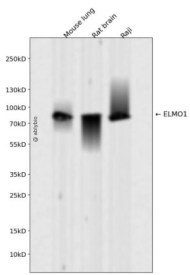
抗原信息	Recombinant fusion protein corresponding to Human ELMO1.
序列	KGALKQNKEVLELAFSILYDSNCQLNFIAPDKHEYCIWTDGLNALLGKDMMSDLTRNDLDTLLSMEIKLRLLDLENIQIPDAP PPIPKEPSNYDFVYDCN

靶点信息

研究背景	This gene encodes a member of the engulfment and cell motility protein family. These proteins interact with dedicator of cytokinesis proteins to promote phagocytosis and cell migration. Increased expression of this gene and dedicator of cytokinesis 1 may promote glioma cell invasion, and single nucleotide polymorphisms in this gene may be associated with diabetic nephropathy. Alternative splicing results in multiple transcript variants. [provided by RefSeq, Aug 2013]
------	---

基因ID	9844
基因名	ELMO1
Swiss	Q92556
别名	CED-12; CED12; ELMO-1

产品验证



Western blot analysis of ELMO1 expressed in Mouse lung,Rat brain,Raji using ELMO1 Rabbit mAb at 1:1 000. Secondary antibody: HRP Goat Anti-Rabbit IgG (H+L) at 1:5000. Lysates/proteins: 30ug per lane. Blocking buffer: 5% non-fat dry milk in TBST. Detection: ECL Enhanced Kit. Exposure time: 120s.

实验步骤

访问官网浏览详情: www.ablybio.cn