

Sonic Hedgehog Rabbit mAb

货号: **AYM28498**

产品信息

| | |
|-------|--|
| 反应 | Human |
| 宿主 | Rabbit |
| 克隆性 | Monoclonal |
| 预测反应 | |
| 应用 | WB IHC IF/ICC FC |
| 推荐浓度 | WB: 1:500 - 1:2000 IHC: 1:50 - 1:200 IF/ICC: 1:50 - 1:200 FC: 1:20 - 1:50 |
| 理论分子量 | 49kDa |
| 实测分子量 | 51kDa |
| 形式 | Liquid |
| 保存条件 | Store at -20°C. Avoid freeze / thaw cycles. Buffer: PBS with 0.75% BSA,50% glycerol,pH7.3. |
| 偶联物 | Unconjugated |
| 阳性对照 | HeLa,HepG2,Rat lung |
| 细胞定位 | Cell membrane,Lipid-anchor,Secreted,extracellular space |
| 纯化 | Affinity purification |

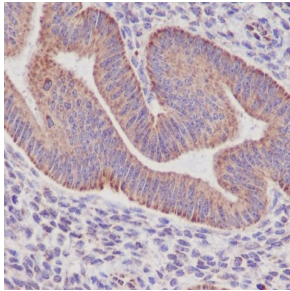
抗原信息

| | |
|------|---|
| 抗原信息 | Recombinant fusion protein corresponding to Human Sonic Hedgehog. |
| 序列 | PGSATVHLEQGGTKLVKDLSPGDRVLAADDQGRLLYSDFLTFLLDRDDGAKKVFYVIETREPRERLLLTAHLLFVAPHNDS ATGEPEASSGSGPPSGGALG |

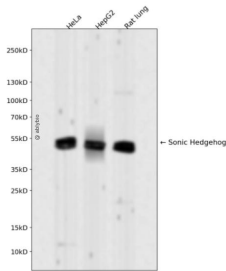
靶点信息

| | |
|-------|---|
| 研究背景 | This gene encodes a protein that is instrumental in patterning the early embryo. It has been implicated as the key inductive signal in patterning of the ventral neural tube, the anterior-posterior limb axis, and the ventral somites. Of three human proteins showing sequence and functional similarity to the sonic hedgehog protein of <i>Drosophila</i> , this protein is the most similar. The protein is made as a precursor that is autocatalytically cleaved; the N-terminal portion is soluble and contains the signalling activity while the C-terminal portion is involved in precursor processing. More importantly, the C-terminal product covalently attaches a cholesterol moiety to the N-terminal product, restricting the N-terminal product to the cell surface and preventing it from freely diffusing throughout the developing embryo. Defects in this protein or in its signalling pathway are a cause of holoprosencephaly (HPE). It is also thought that mutations in this gene or in its signalling pathway may be responsible for VACTERL syndrome. Additionally, mutations in a long range enhancer located approximately 1 megabase upstream of this gene disrupt limb patterning and can result in preaxial polydactyly. |
| 基因ID | 6469 |
| 基因名 | SHH |
| Swiss | Q15465 |
| 别名 | SHH;HHG1;HLP3;HPE3;MCOPCB5;SMMCI;TPT;TPTPS |

产品验证



Immunohistochemical analysis of paraffin-embedded human endometrium, using Sonic Hedgehog Antibody.



Western blot analysis of Sonic Hedgehog expressed in HeLa, HepG2, Rat lung using Sonic Hedgehog Rabbit mAb at 1:1000. Secondary antibody: HRP Goat Anti-Rabbit IgG (H+L) at 1:5000. Lysates/proteins: 30ug per lane. Blocking buffer: 5% non-fat dry milk in TBST. Detection: ECL Enhanced Kit. Exposure time: 120s.

实验步骤

访问官网浏览详情: www.ablybio.cn