

# ERG Rabbit mAb

货号: **AYM28497**

## 产品信息

反应	Human,Mouse,Rat
宿主	Rabbit
克隆性	Monoclonal
预测反应	
应用	WB IHC ICC ChIP
推荐浓度	<b>WB:</b> 1:500 - 1:2000 <b>IHC:</b> 1:50 - 1:200 <b>ICC:</b> 1:50 - 1:200
理论分子量	35kDa/36kDa/41kDa/52kDa/53kDa/54kDa
实测分子量	55kDa
形式	Liquid
保存条件	Store at -20°C. Avoid freeze / thaw cycles. Buffer: PBS with 0.75% BSA,50% glycerol,pH7.3.
偶联物	Unconjugated
阳性对照	MCF7,THP-1,HeLa,BT-474,293T
细胞定位	Cytoplasm,Nucleus
纯化	Affinity purification

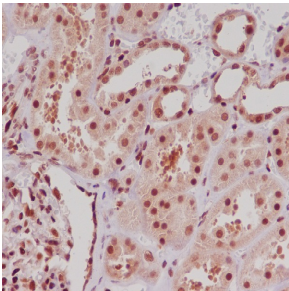
## 抗原信息

抗原信息	Recombinant fusion protein corresponding to Human ERG.
序列	MASTIKEALSVMSEDSQSLFECAYGTPHLAKTEMTASSSSDYGQTSKMSPRVPQQDWLSQPPARVTIKMECNPSQVNGSR NSPDECSVAKGGKMGVSPDTVGMNYGSYMEEKHMPPPNMTTNERRVIVPADPTLWSTDHVRQWLEWAVKEYGLPDVN ILLFQNIQDKELCKMTKDDFQRLTPSYNADILLSHLHYLRETPLPHLTSDDVDKALQNSPRLMHARNTGGAAFIPNTSVYP EATQRITRDPDLPYEPPIRSAAWTGHGHPTPQSKAAQPSPSTV

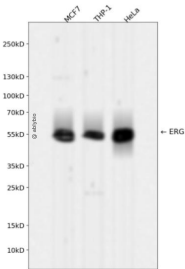
## 靶点信息

研究背景	This gene encodes a member of the erythroblast transformation-specific (ETS) family of transcription factors. All members of this family are key regulators of embryonic development, cell proliferation, differentiation, angiogenesis, inflammation, and apoptosis. The protein encoded by this gene is mainly expressed in the nucleus. It contains an ETS DNA-binding domain and a PNT (pointed) domain which is implicated in the self-association of chimeric oncoproteins. This protein is required for platelet adhesion to the subendothelium, inducing vascular cell remodeling. It also regulates hematopoiesis, and the differentiation and maturation of megakaryocytic cells. This gene is involved in chromosomal translocations, resulting in different fusion gene products, such as TMPSSR2-ERG and NDRG1-ERG in prostate cancer, EWS-ERG in Ewing's sarcoma and FUS-ERG in acute myeloid leukemia. More than two dozens of transcript variants generated from combinatorial usage of three alternative promoters and multiple alternative splicing events have been reported, but the full-length nature of many of these variants has not been determined.
基因ID	2078
基因名	ERG
Swiss	P11308
别名	ERG;erg-3;p55

## 产品验证



Immunohistochemical analysis of paraffin-embedded human kidney, using ERG Antibody.



Western blot analysis of ERG expressed in MCF7, THP-1, HeLa using ERG Rabbit mAb at 1:1000. Secondary antibody: HRP Goat Anti-Rabbit IgG (H+L) at 1:5000. Lysates/proteins: 30ug per lane. Blocking buffer: 5% non-fat dry milk in TBST. Detection: ECL Enhanced Kit. Exposure time: 120s.

## 实验步骤

访问官网浏览详情: [www.ablybio.cn](http://www.ablybio.cn)