

CPI17 alpha Rabbit mAb

货号: **AYM28490**

产品信息

反应	Human,Mouse,Rat
宿主	Rabbit
克隆性	Monoclonal
预测反应	
应用	WB IP
推荐浓度	WB: 1:500 - 1:2000 IP: 1:20 - 1:50
理论分子量	13kDa/16kDa
实测分子量	17kDa
形式	Liquid
保存条件	Store at -20°C. Avoid freeze / thaw cycles. Buffer: PBS with 0.75% BSA,50% glycerol,pH7.3.
偶联物	Unconjugated
阳性对照	K-562,Mouse lung,Mouse brain,Mouse spleen,Rat lung,Rat testis
细胞定位	Cytoplasm
纯化	Affinity purification

抗原信息

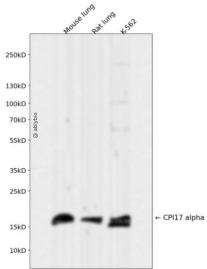
抗原信息	Recombinant fusion protein corresponding to Human CPI17 alpha.
序列	MAAQRLLGKRVLSKLLQSPSRARGPGGSPGGLQKRHARVTVKYDRRELQRRLDVEKWIDGRLEELYRGMEADMPDEINIDE LLELESEEERSRKIQGLLKSCGKPVDFIQELLAKLQGLHRQPGLRQPSPSHDGSLSPLQDRARTAH

靶点信息

研究背景	The protein encoded by this gene belongs to the protein phosphatase 1 (PP1) inhibitor family. This protein is an inhibitor of smooth muscle myosin phosphatase, and has higher inhibitory activity when phosphorylated. Inhibition of myosin phosphatase leads to increased myosin phosphorylation and enhanced smooth muscle contraction. Alternatively spliced transcript variants encoding different isoforms have been noted for this gene.
基因ID	94274

基因名	PPP1R14A
Swiss	Q96A00
别名	PPP1R14A;CPI-17;CPI17;PPP1INL

产品验证



Western blot analysis of CPI17 alpha expressed in Mouse lung,Rat lung,K-562 using CPI17 alpha Rabbit mAb at 1:1000. Secondary antibody: HRP Goat Anti-Rabbit IgG (H+L) at 1:5000. Lysates/proteins: 30ug per lane. Blocking buffer: 5% non-fat dry milk in TBST. Detection: ECL Enhanced Kit. Exposure time: 120s.

实验步骤

访问官网浏览详情: www.ablybio.cn