

PRC1 Rabbit mAb

货号: **AYM28484**

产品信息

反应	Human,Mouse,Rat
宿主	Rabbit
克隆性	Monoclonal
预测反应	
应用	WB IHC IF/ICC IP FC
推荐浓度	WB: 1:500 - 1:2000 IHC: 1:50 - 1:200 IF/ICC: 1:50 - 1:200 IP: 1:20 - 1:50 FC: 1:20 - 1:50
理论分子量	61kDa/66kDa/70kDa/71kDa
实测分子量	72kDa
形式	Liquid
保存条件	Store at -20°C. Avoid freeze / thaw cycles. Buffer: PBS with 0.75% BSA,50% glycerol,pH7.3.
偶联物	Unconjugated
阳性对照	MCF7,Jurkat,293T,HepG2
细胞定位	Cytoplasm,Midbody,Nucleus,cytoskeleton,spindle pole
纯化	Affinity purification

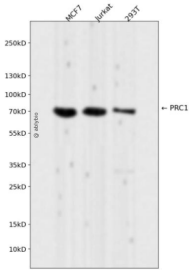
抗原信息

抗原信息	Recombinant fusion protein corresponding to Human PRC1.
序列	LFEGVQKWEETWRLFLEFERKASDPNRFTNRGGNLLKEEKQRAKLQKMLPKLEEELKARIELWEQEHSKAFMVNGQKFM EYVAEQWEMHRLEKERAKQERQLKNKKQTETEMLYGSAPRTPSKRRGLAPNTPGKARKLNTTMSNATANSSIRPIFGGT VYHSPVSRLLPPSGSKPVAASTCSGKKTTPRTGRHGANKENLELNGSILSGGYPGSAPLQRNFSINSVASTYSEFAKDPPLSD SSTVGLQRELSKASKSDATSGILNSTNIQS

靶点信息

研究背景	This gene encodes a protein that is involved in cytokinesis. The protein is present at high levels during the S and G2/M phases of mitosis but its levels drop dramatically when the cell exits mitosis and enters the G1 phase. It is located in the nucleus during interphase, becomes associated with mitotic spindles in a highly dynamic manner during mitosis, and localizes to the cell mid-body during cytokinesis. This protein has been shown to be a substrate of several cyclin-dependent kinases (CDKs). It is necessary for polarizing parallel microtubules and concentrating the factors responsible for contractile ring assembly. Alternative splicing results in multiple transcript variants.
基因ID	9055
基因名	PRC1
Swiss	O43663
别名	PRC1;ASE1

产品验证



Western blot analysis of PRC1 expressed in MCF7, Jurkat, 293T using PRC1 Rabbit mAb at 1:1000. Secondary antibody: HRP Goat Anti-Rabbit IgG (H+L) at 1:5000. Lysates/proteins: 30ug per lane. Blocking buffer: 5% non-fat dry milk in TBST. Detection: ECL Enhanced Kit. Exposure time: 120s.

实验步骤

访问官网浏览详情: www.ablybio.cn