

Cdk2 Rabbit mAb

货号: **AYM28478**

产品信息

| | |
|-------|--|
| 反应 | Human,Mouse,Rat |
| 宿主 | Rabbit |
| 克隆性 | Monoclonal |
| 预测反应 | |
| 应用 | WB IHC IF/ICC IP |
| 推荐浓度 | WB: 1:500 - 1:2000 IHC: 1:50 - 1:200 IF/ICC: 1:50 - 1:200 IP: 1:20 - 1:50 |
| 理论分子量 | 30kDa/33kDa |
| 实测分子量 | 33kDa |
| 形式 | Liquid |
| 保存条件 | Store at -20°C. Avoid freeze / thaw cycles. Buffer: PBS with 0.75% BSA,50% glycerol,pH7.3. |
| 偶联物 | Unconjugated |
| 阳性对照 | 293T,HeLa |
| 细胞定位 | Cajal body,Cytoplasm,Endosome,Nucleus,centrosome,cytoskeleton,microtubule organizing center |
| 纯化 | Affinity purification |

抗原信息

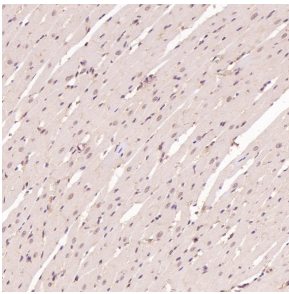
| | |
|------|--|
| 抗原信息 | Recombinant fusion protein corresponding to Human Cdk2. |
| 序列 | RALFPGDSEIDQLFRIFRTLGTTPDEVVWPGVTSMPDYKPSFPKWARQDFSKVVPPLDEDGRSLLSQMLHYDPNKRISAKA ALAHPPFQDVTKPVPHLRL |

靶点信息

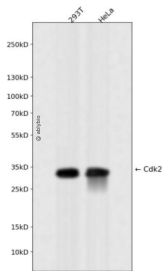
| | |
|------|--|
| 研究背景 | This gene encodes a member of a family of serine/threonine protein kinases that participate in cell cycle regulation. The encoded protein is the catalytic subunit of the cyclin-dependent protein kinase complex, which regulates progression through the cell cycle. Activity of this protein is especially critical during the G1 to S phase transition. This protein associates with and regulated by other subunits of the complex including cyclin A or E, CDK inhibitor p21Cip1 (CDKN1A), and p27Kip1 (CDKN1B). Alternative splicing results in multiple transcript variants. |
|------|--|

| | |
|-------|----------------------|
| 基因ID | 1017 |
| 基因名 | CDK2 |
| Swiss | P24941 |
| 别名 | CDK2;CDKN2;p33(CDK2) |

产品验证



Immunohistochemical analysis of paraffin-embedded Rat heart, using the Antibody at 1:200 dilution.



Western blot analysis of Cdk2 expressed in 293T, HeLa using Cdk2 Rabbit mAb at 1:1000. Secondary antibody: HRP Goat Anti-Rabbit IgG (H+L) at 1:5000. Lysates/proteins: 30ug per lane. Blocking buffer: 5% non-fat dry milk in TBST. Detection: ECL Enhanced Kit. Exposure time: 120s

实验步骤

访问官网浏览详情: www.ablybio.cn