

MKLP1 Rabbit mAb

货号: **AYM28476**

产品信息

反应	Human,Mouse,Rat
宿主	Rabbit
克隆性	Monoclonal
预测反应	
应用	WB IF/ICC
推荐浓度	WB: 1:500 - 1:2000 IF/ICC: 1:50 - 1:200
理论分子量	98kDa
实测分子量	98kDa
形式	Liquid
保存条件	Store at -20°C. Avoid freeze / thaw cycles. Buffer: PBS with 0.75% BSA,50% glycerol,pH7.3.
偶联物	Unconjugated
阳性对照	HeLa,Rat testis
细胞定位	Cytoplasm,Midbody,Nucleus,cytoskeleton,spindle
纯化	Affinity purification

抗原信息

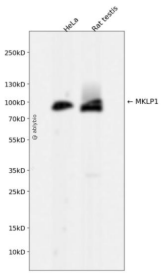
抗原信息	Recombinant fusion protein corresponding to Human MKLP1.
序列	NAPPIRLRHRRSRGADRWVDHKPASNMQTETVMQPHVPHAITVSVANEKALAKCEKYMLTHQELASDGEIETKLIKGDYKTRGGGQSVQFTDIETLKQESPNGSRKRRSSTVAPAQPDGAESEWTDVETRCVAVEMRAGSQLGPGYQHHAQPKRKKP

靶点信息

研究背景	The protein encoded by this gene is a member of kinesin-like protein family. This family includes microtubule-dependent molecular motors that transport organelles within cells and move chromosomes during cell division. This protein has been shown to cross-bridge antiparallel microtubules and drive microtubule movement in vitro. Alternate splicing of this gene results in multiple transcript variants. [provided by RefSeq, Jul 2013]
------	---

基因ID	9493
基因名	KIF23
Swiss	Q02241
别名	CHO1; KNSL5; MKLP-1; MKLP1

产品验证



Western blot analysis of MKLP1 expressed in HeLa, Rat testis using MKLP1 Rabbit mAb at 1:1000. Secondary antibody: HRP Goat Anti-Rabbit IgG (H+L) at 1:5000. Lysates/proteins: 30ug per lane. Blocking buffer: 5% non-fat dry milk in TBST. Detection: ECL Enhanced Kit. Exposure time: 120s.

实验步骤

访问官网浏览详情: www.ablybio.cn