

CD11b Rabbit mAb

货号: **AYM28456**

产品信息

反应	Human,Mouse
宿主	Rabbit
克隆性	Monoclonal
预测反应	
应用	WB IHC IF/ICC
推荐浓度	WB: 1:500 - 1:2000 IHC: 1:50 - 1:200 IF/ICC: 1:50 - 1:200
理论分子量	127kDa
实测分子量	170KDa
形式	Liquid
保存条件	Store at -20°C. Avoid freeze / thaw cycles. Buffer: PBS with 0.75% BSA,50% glycerol,pH7.3.
偶联物	Unconjugated
阳性对照	THP-1,U-937,Mouse lung,Mouse brain,Mouse spleen,Rat lung
细胞定位	Membrane,Single-pass type I membrane protein
纯化	Affinity purification

抗原信息

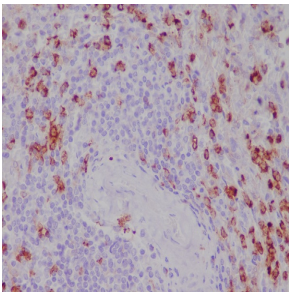
抗原信息	Recombinant fusion protein corresponding to Human CD11b.
序列	PQEDSDIAFLIDGSGSIIPHDFRRMKEFVSTVMEQLKSKTLFSLMQYSEEFRIHFTFKEFQNNPNPRSLVKPITQLLGRTHT ATGIRKVVRELFNITNGARKNAFKILVVIITDGEKFGDPLGYEDVIPEADREGVIRYVIGVGDADRSEKSRQELNTIASKPPRDH VFQVNNFEALKTIQNQLREKIFAIEGTQT

靶点信息

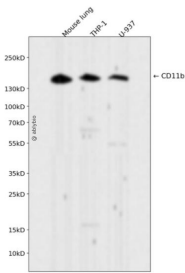
研究背景	This gene encodes the integrin alpha M chain. Integrins are heterodimeric integral membrane proteins composed of an alpha chain and a beta chain. This I-domain containing alpha integrin combines with the beta 2 chain (ITGB2) to form a leukocyte-specific integrin referred to as macrophage receptor 1 ('Mac-1'), or inactivated-C3b (iC3b) receptor 3 ('CR3'). The alpha M beta 2 integrin is important in the adherence of neutrophils and monocytes to stimulated endothelium, and also in the phagocytosis of complement coated particles. Multiple transcript variants encoding different isoforms have been found for this gene.
------	---

基因ID	3684
基因名	ITGAM
Swiss	P11215
别名	CD11B;CR3A;MAC-1;MAC1A;MO1A;SLEB6;ITGAM;CD11b/ITAM

产品验证



Immunohistochemical analysis of paraffin-embedded human spleen, using CD11b Antibody.



Western blot analysis of CD11b expressed in Mouse lung, THP-1, U-937 using CD11b Rabbit mAb at 1:1000. Secondary antibody: HRP Goat Anti-Rabbit IgG (H+L) at 1:5000. Lysates/proteins: 30 ug per lane. Blocking buffer: 5% non-fat dry milk in TBST. Detection: ECL Enhanced Kit. Exposure time: 120s.

实验步骤

访问官网浏览详情: www.ablybio.cn