

PKN2 Rabbit mAb

货号: **AYM28453**

产品信息

反应	Human,Mouse,Rat
宿主	Rabbit
克隆性	Monoclonal
预测反应	
应用	WB IHC IF/ICC IP FC
推荐浓度	WB: 1:500 - 1:2000 IHC: 1:50 - 1:200 IF/ICC: 1:50 - 1:200 IP: 1:20 - 1:50 FC: 1:20 - 1:50
理论分子量	75kDa/94kDa/106kDa/110kDa/112kDa
实测分子量	112kDa
形式	Liquid
保存条件	Store at -20°C. Avoid freeze / thaw cycles. Buffer: PBS with 0.75% BSA,50% glycerol,pH7.3.
偶联物	Unconjugated
阳性对照	Rat lung
细胞定位	apical junction complex,centrosome,cytoplasm,cytosol,intermediate filament cytoskeleton,nuclear body,nucleoplasm,nucleus,perinuclear region of cytoplasm,plasma membrane
纯化	Affinity purification

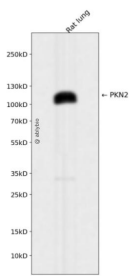
抗原信息

抗原信息	Recombinant fusion protein corresponding to Human PKN2.
序列	GQDSETVFDIQNDRNSILPKSQSEYKPDTPQSGLEYSIGIELEDRRSQQRFFQFNLQDFRCCAVLGRGHFGKVLLAEYKNT NEMFAIKALKKGDIVARDEV

靶点信息

研究背景	PKC-related serine/threonine-protein kinase and Rho/Rac effector protein that participates in specific signal transduction responses in the cell. Plays a role in the regulation of cell cycle progression, actin cytoskeleton assembly, cell migration, cell adhesion, tumor cell invasion and transcription activation signaling processes. Phosphorylates CTTN in hyaluronan-induced astrocytes and hence decreases CTTN ability to associate with filamentous actin. Phosphorylates HDAC5, therefore lead to impair HDAC5 import. Direct Rho A target required for the regulation of the maturation of primordial junctions into apical junction formation in bronchial epithelial cells. Required for G2/M phases of the cell cycle progression and abscission during cytokinesis in a ECT2-dependent manner. Stimulates FYN kinase activity that is required for establishment of skin cell-cell adhesion during keratinocytes differentiation. Regulates epithelial bladder cells speed and direction of movement during cell migration and tumor cell invasion. Inhibits Akt pro-survival-induced kinase activity. Mediates Rho protein-induced transcriptional activation via the c-fos serum response factor (SRF. Involved in the negative regulation of ciliogenesis.
基因ID	5586
基因名	PKN2
Swiss	Q16513
别名	PAK2;PRK2;PRKCL2;PRO2042;Pak-2;STK7;PKN2

产品验证



Western blot analysis of PKN2 expressed in Rat lung using PKN2 Rabbit mAb at 1:1000. Secondary antibody: HRP Goat Anti-Rabbit IgG (H+L) at 1:5000. Lysates/proteins: 30ug per lane. Blocking buffer: 5% non-fat dry milk in TBST. Detection: ECL Enhanced Kit. Exposure time: 120s.

实验步骤

访问官网浏览详情: www.ablybio.cn