

Bcl-XL Rabbit mAb

货号: **AYM28447**

产品信息

反应	Human,Mouse,Rat
宿主	Rabbit
克隆性	Monoclonal
预测反应	
应用	WB IHC IF/ICC IP FC
推荐浓度	WB: 1:500 - 1:2000 IHC: 1:50 - 1:200 IF/ICC: 1:50 - 1:200 IP: 1:20 - 1:50 FC: 1:20 - 1:50
理论分子量	18kDa/25-26kDa
实测分子量	26kDa
形式	Liquid
保存条件	Store at -20°C. Avoid freeze / thaw cycles. Buffer: PBS with 0.75% BSA,50% glycerol,pH7.3.
偶联物	Unconjugated
阳性对照	OVCAR3,Rat lung,Rat spleen
细胞定位	Cytoplasm,Cytoplasmic side,Cytoplasmic vesicle,Mitochondrion inner membrane,Mitochondrion matrix,Mitochondrion outer membrane,Nucleus membrane,Single-pass membrane protein,centrosome,cytoskeleton,cytosol,microtubule organizing center,secretory vesicle,synaptic vesicle membrane
纯化	Affinity purification

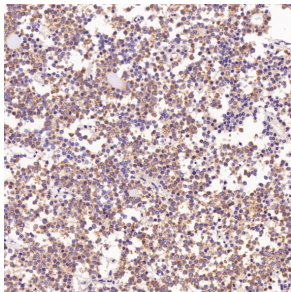
抗原信息

抗原信息	Recombinant fusion protein corresponding to Human Bcl-XL.
序列	MSQSNRELVVDFLSYKLSQKGYWSQFSDVEENRTEAPEGTESEMETPSAINGNPSWHLADSPAVNGATGHSSSLDAR EV

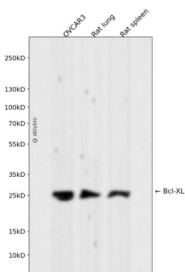
靶点信息

研究背景	The protein encoded by this gene belongs to the BCL-2 protein family. BCL-2 family members form hetero- or homodimers and act as anti- or pro-apoptotic regulators that are involved in a wide variety of cellular activities. The proteins encoded by this gene are located at the outer mitochondrial membrane, and have been shown to regulate outer mitochondrial membrane channel (VDAC) opening. VDAC regulates mitochondrial membrane potential, and thus controls the production of reactive oxygen species and release of cytochrome C by mitochondria, both of which are the potent inducers of cell apoptosis. Alternative splicing results in multiple transcript variants encoding two different isoforms. The longer isoform acts as an apoptotic inhibitor and the shorter isoform acts as an apoptotic activator.
基因ID	598
基因名	BCL2L1
Swiss	Q07817
别名	BCL2L1;BCL-XL/S;BCL2L;BCLX;Bcl-X;PPP1R52;BCL2 like 1;Bcl-XL

产品验证



Immunohistochemical analysis of paraffin-embedded Human pituitary tumor, using the Antibody at 1:400 dilution.



Western blot analysis of Bcl-XL expressed in OVCAR3, Rat lung, Rat spleen using Bcl-XL Rabbit mAb at 1:1000. Secondary antibody: HRP Goat Anti-Rabbit IgG (H+L) at 1:5000. Lysates/proteins: 30ug per lane. Blocking buffer: 5% non-fat dry milk in TBST. Detection: ECL Enhanced Kit. Exposure time: 120s.

实验步骤

访问官网浏览详情: www.ablybio.cn