

# SATB2 Rabbit mAb

货号: **AYM28439**

## 产品信息

反应	Human,Mouse,Rat
宿主	Rabbit
克隆性	Monoclonal
预测反应	
应用	WB IHC IF/ICC
推荐浓度	<b>WB:</b> 1:500 - 1:2000 <b>IHC:</b> 1:50 - 1:200 <b>IF/ICC:</b> 1:50 - 1:200
理论分子量	81kDa
实测分子量	81kDa
形式	Liquid
保存条件	Store at -20°C. Avoid freeze / thaw cycles. Buffer: PBS with 0.75% BSA,50% glycerol,pH7.3.
偶联物	Unconjugated
阳性对照	K-562,Rat brain
细胞定位	
纯化	Affinity purification

## 抗原信息

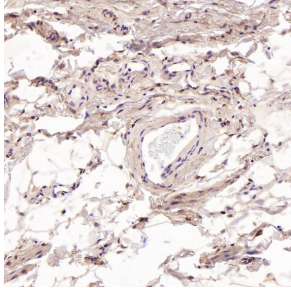
抗原信息	Recombinant fusion protein corresponding to Human SATB2.
序列	SMISSIVNSTYYANVSATKCKQEFGRWYKYYKIKIVERVERENLSDYCVLGQRPMHLPNMNQLASLGKTNEQSPHSQIHHS TPIRNQVPALQPIMSPGLLSP

## 靶点信息

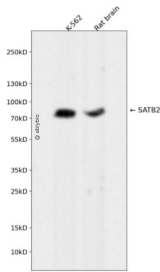
研究背景	This gene encodes a DNA binding protein that specifically binds nuclear matrix attachment regions. The encoded protein is involved in transcription regulation and chromatin remodeling. Defects in this gene are associated with isolated cleft palate and mental retardation. Alternate splicing results in multiple transcript variants that encode the same protein. [provided by RefSeq, Feb 2010]
基因ID	23314

基因名	SATB2
Swiss	Q3ZB87
别名	GLSS

## 产品验证



Immunohistochemical analysis of paraffin-embedded Human testis cancer, using the Antibody at 1:100 dilution.



Western blot analysis of SATB2 expressed in K-562, Rat brain using SATB2 Rabbit mAb at 1:1000. Secondary antibody: HRP Goat Anti-Rabbit IgG (H+L) at 1:5000. Lysates/proteins: 30ug per lane. Blocking buffer: 5% non-fat dry milk in TBST. Detection: ECL Enhanced Kit. Exposure time: 120s.

## 实验步骤

访问官网浏览详情: [www.ablybio.cn](http://www.ablybio.cn)