

# KIFC1 Rabbit mAb

货号: **AYM28437**

## 产品信息

反应	Human
宿主	Rabbit
克隆性	Monoclonal
预测反应	
应用	WB IHC IF/ICC IP
推荐浓度	<b>WB:</b> 1:500 - 1:2000 <b>IHC:</b> 1:50 - 1:200 <b>IF/ICC:</b> 1:50 - 1:200 <b>IP:</b> 1:20 - 1:50
理论分子量	73kDa
实测分子量	74kDa
形式	Liquid
保存条件	Store at -20°C. Avoid freeze / thaw cycles. Buffer: PBS with 0.75% BSA,50% glycerol,pH7.3.
偶联物	Unconjugated
阳性对照	Jurkat,HT-29,HeLa,A-549
细胞定位	Cytoplasm,Early endosome,Nucleus,centrosome,cytoskeleton,microtubule organizing center,spindle
纯化	Affinity purification

## 抗原信息

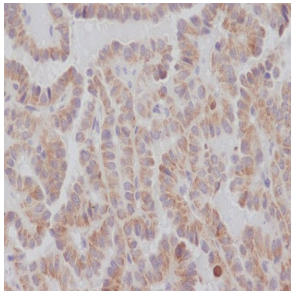
抗原信息	Recombinant fusion protein corresponding to Human KIFC1.
序列	MDPQRSPLLEVKGNIELKRPLIKAPSQLPLSGSRLKRRPDQMEDGLEPEKKRTRGLGATTKITTSHPRVPSLTTVPQTQQGT TAQKVSKKTGPRCSTAIATGLKNQKPVPAVPVQKSGTSGVPPMAGGKKPSKRPAWDLKGQLCDLNAELKRCRERTQTLD QENQQLQDQLRDAQQVKALGTERTTLEGLHAKVQAQAEQGGQELKNLRACVLELEERLSTQEGLVQELQKKQVELQEE RRGLMSQLEE

## 靶点信息

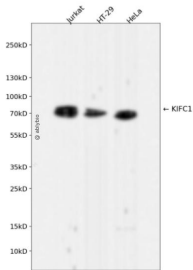
研究背景	Minus end-directed microtubule-dependent motor required for bipolar spindle formation. May contribute to movement of early endocytic vesicles (By similarity). Regulates cilium formation and structure (By similarity).
------	--

基因ID	3833
基因名	KIFC1
Swiss	Q9BW19
别名	KIFC1;HSET;KNSL2

## 产品验证



Immunohistochemical analysis of paraffin-embedded human thyroid carcinoma, using KIFC1 Antibody.



Western blot analysis of KIFC1 expressed in Jurkat, HT-29, HeLa using KIFC1 Rabbit mAb at 1:10 00. Secondary antibody: HRP Goat Anti-Rabbit IgG (H+L) at 1:5000. Lysates/proteins: 30ug per lane. Blocking buffer: 5% non-fat dry milk in TBST. Detection: ECL Enhanced Kit. Exposure time: 120s.

## 实验步骤

访问官网浏览详情: [www.ablybio.cn](http://www.ablybio.cn)