

NF- κ B p65 Rabbit mAb

货号: **AYM28436**

产品信息

反应	Human,Mouse
宿主	Rabbit
克隆性	Monoclonal
预测反应	
应用	WB IHC IF/ICC IP FC
推荐浓度	WB: 1:500 - 1:2000 IHC: 1:50 - 1:200 IF/ICC: 1:50 - 1:200 IP: 1:20 - 1:50 FC: 1:20 - 1:50
理论分子量	58kDa/59kDa/60kDa
实测分子量	65kDa
形式	Liquid
保存条件	Store at -20°C. Avoid freeze / thaw cycles. Buffer: PBS with 0.75% BSA,50% glycerol,pH7.3.
偶联物	Unconjugated
阳性对照	HeLa,293T,MCF7,Mouse lung,Mouse kidney,Rat lung,Rat kidney
细胞定位	Cytoplasm,Nucleus
纯化	Affinity purification

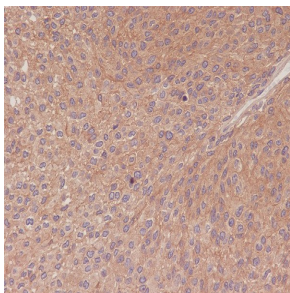
抗原信息

抗原信息	Recombinant fusion protein corresponding to Human NF- κ B p65.
序列	RSTDTTKTHPTIKINGYTGPGTVRISLVTKDPPHRPHPELVGKDCRDGIFYEALCPDRCIHSFQNLGIQCVKKRDLEQAIS QRIQTNNNPFQVPIEEQRGDYDLNAVRLCFQVTVRDPSSGRPLRLPPVLS

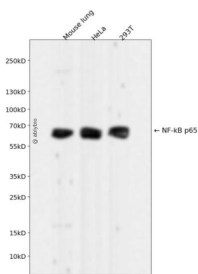
靶点信息

研究背景	NF-kappa-B is a ubiquitous transcription factor involved in several biological processes. It is held in the cytoplasm in an inactive state by specific inhibitors. Upon degradation of the inhibitor, NF-kappa-B moves to the nucleus and activates transcription of specific genes. NF-kappa-B is composed of NFKB1 or NFKB2 bound to either REL, RELB, or RELD. The most abundant form of NF-kappa-B is NFKB1 complexed with the product of this gene, RELB. Four transcript variants encoding different isoforms have been found for this gene.
基因ID	5970
基因名	RELA
Swiss	Q04206
别名	NFKB3;p65;NF-kB p65;RELA;CMCU

产品验证



Immunohistochemical analysis of paraffin-embedded human transitional cell carcinoma of bladder, using NF-kB p65 Antibody.



Western blot analysis of NF-kB p65 expressed in Mouse lung, HeLa, 293T using NF-kB p65 Rabbit mAb at 1:1000. Secondary antibody: HRP Goat Anti-Rabbit IgG (H+L) at 1:5000. Lysates/proteins: 30ug per lane. Blocking buffer: 5% non-fat dry milk in TBST. Detection: ECL Enhanced Kit. Exposure time: 120s.

实验步骤

访问官网浏览详情: www.ablybio.cn