

E Cadherin Rabbit mAb

货号: **AYM28427**

产品信息

反应	Human
宿主	Rabbit
克隆性	Monoclonal
预测反应	
应用	WB IHC IF/ICC FC
推荐浓度	WB: 1:500 - 1:2000 IHC: 1:50 - 1:200 IF/ICC: 1:50 - 1:200 FC: 1:20 - 1:50
理论分子量	90kDa/97kDa
实测分子量	80kDa/120kDa
形式	Liquid
保存条件	Store at -20°C. Avoid freeze / thaw cycles. Buffer: PBS with 0.75% BSA,50% glycerol,pH7.3.
偶联物	Unconjugated
阳性对照	DU145,Mouse kidney
细胞定位	Cell junction,Cell membrane,Endosome,Golgi apparatus,Single-pass type I membrane protein,trans-Golgi network
纯化	Affinity purification

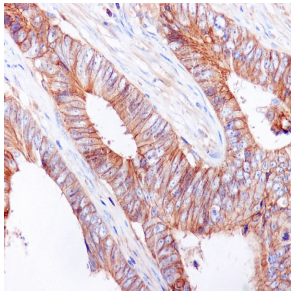
抗原信息

抗原信息	Recombinant fusion protein corresponding to Human E Cadherin.
序列	PIFNPTTYKGQVPENEANVVITLKVTDADAPNTPAWEAVYITLNDGGQFVVTNPVNNDGILKTAKGLDFEAKQYILHVAVTNVVPFEVSLTTSTATVTVDVLDVNEAPIFVPEKRVESDFGVGQEITSYTAQEPDTFMEQKITYRIWRDTANWLEINPDTGAISTRAELDREDFEHVKNSTYALIIATDNGSPVATGTGTLILLSDVNDNAPIPEPRTIFFCERNPKPQVINIIDADLPPN

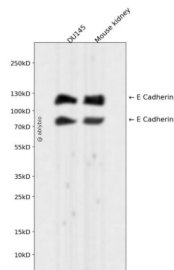
靶点信息

研究背景	This gene encodes a classical cadherin of the cadherin superfamily. Alternative splicing results in multiple transcript variants, at least one of which encodes a preproprotein that is proteolytically processed to generate the mature glycoprotein. This calcium-dependent cell-cell adhesion protein is comprised of five extracellular cadherin repeats, a transmembrane region and a highly conserved cytoplasmic tail. Mutations in this gene are correlated with gastric, breast, colorectal, thyroid and ovarian cancer. Loss of function of this gene is thought to contribute to cancer progression by increasing proliferation, invasion, and/or metastasis. The ectodomain of this protein mediates bacterial adhesion to mammalian cells and the cytoplasmic domain is required for internalization. This gene is present in a gene cluster with other members of the cadherin family on chromosome 16.
基因ID	999
基因名	CDH1
Swiss	P12830
别名	Arc-1;CD324;CDHE;ECAD;LCAM;UVO;CDH1;E-Cadherin

产品验证



Immunohistochemical analysis of paraffin-embedded human colon cancer, using E Cadherin Antibody.



Western blot analysis of E Cadherin expressed in DU145, Mouse kidney using E Cadherin Rabbit mAb at 1:1000. Secondary antibody: HRP Goat Anti-Rabbit IgG (H+L) at 1:5000. Lysates/proteins: 30ug per lane. Blocking buffer: 5% non-fat dry milk in TBST. Detection: ECL Enhanced Kit. Exposure time: 120s.

实验步骤

访问官网浏览详情: www.ablybio.cn