

# Phospho-PP2A alpha (Y307) Rabbit mAb

货号: **AYM28426**

## 产品信息

反应	Human,Mouse,Rat
宿主	Rabbit
克隆性	Monoclonal
预测反应	
应用	WB IHC IF/ICC IP
推荐浓度	<b>WB:</b> 1:500 - 1:2000 <b>IHC:</b> 1:50 - 1:200 <b>IF/ICC:</b> 1:50 - 1:200 <b>IP:</b> 1:20 - 1:50
理论分子量	29kDa/35kDa
实测分子量	35kDa
形式	Liquid
保存条件	Store at -20°C. Avoid freeze / thaw cycles. Buffer: PBS with 0.75% BSA,50% glycerol,pH7.3.
偶联物	Unconjugated
阳性对照	HeLa,293T,NIH/3T3,Rat brain
细胞定位	Chromosome,Cytoplasm,Nucleus,centromere,cytoskeleton,spindle pole
纯化	Affinity purification

## 抗原信息

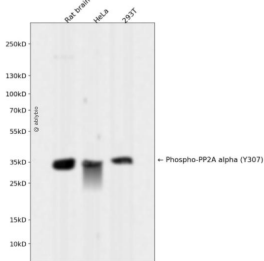
抗原信息	Recombinant fusion protein corresponding to Human Phospho-PP2A alpha (Y307).
------	--

## 靶点信息

研究背景	This gene encodes the phosphatase 2A catalytic subunit. Protein phosphatase 2A is one of the four major Ser/Thr phosphatases, and it is implicated in the negative control of cell growth and division. It consists of a common heteromeric core enzyme, which is composed of a catalytic subunit and a constant regulatory subunit, that associates with a variety of regulatory subunits. This gene encodes an alpha isoform of the catalytic subunit.
基因ID	5515

基因名	PPP2CA
Swiss	P67775
别名	Phospho-PP2A alpha (Y307)

## 产品验证



Western blot analysis of Phospho-PP2A alpha (Y307) expressed in Rat brain, HeLa, 293T using Phospho-PP2A alpha (Y307) Rabbit mAb at 1:1000. Secondary antibody: HRP Goat Anti-Rabbit IgG (H+L) at 1:5000. Lysates/proteins: 30ug per lane. Blocking buffer: 5% non-fat dry milk in TBST. Detection: ECL Enhanced Kit. Exposure time: 120s.

## 实验步骤

访问官网浏览详情: [www.ablybio.cn](http://www.ablybio.cn)