

Smad3 Rabbit mAb

货号: **AYM28425**

产品信息

反应	Human,Mouse,Rat
宿主	Rabbit
克隆性	Monoclonal
预测反应	
应用	WB IHC IF/ICC FC
推荐浓度	WB: 1:500 - 1:2000 IHC: 1:50 - 1:200 IF/ICC: 1:50 - 1:200 FC: 1:20 - 1:50
理论分子量	25kDa/35kDa/43kDa/48kDa
实测分子量	58kDa
形式	Liquid
保存条件	Store at -20°C. Avoid freeze / thaw cycles. Buffer: PBS with 0.75% BSA,50% glycerol,pH7.3.
偶联物	Unconjugated
阳性对照	HT-1080,HCT116,Mouse brain,Rat brain
细胞定位	Cytoplasm,Nucleus
纯化	Affinity purification

抗原信息

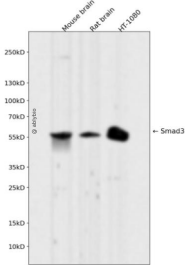
抗原信息	Recombinant fusion protein corresponding to Human Smad3.
------	--

靶点信息

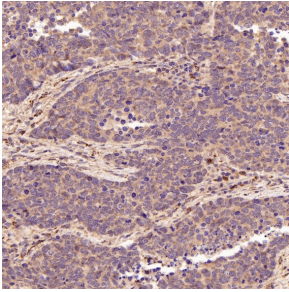
研究背景	The protein encoded by this gene belongs to the SMAD, a family of proteins similar to the gene products of the Drosophila gene 'mothers against decapentaplegic' (Mad) and the C. elegans gene Sma. SMAD proteins are signal transducers and transcriptional modulators that mediate multiple signaling pathways. This protein functions as a transcriptional modulator activated by transforming growth factor-beta and is thought to play a role in the regulation of carcinogenesis.
基因ID	4088

基因名	SMAD3
Swiss	P84022
别名	Smad3

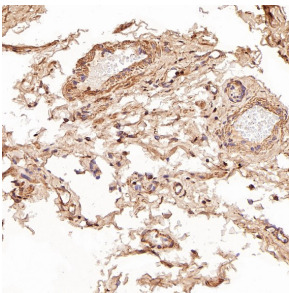
产品验证



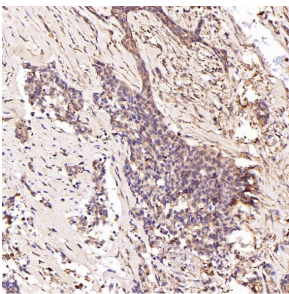
Western blot analysis of Smad3 expressed in Mouse brain,Rat brain,HT-1080 using Smad3 Rabbit mAb at 1:1000. Secondary antibody: HRP Goat Anti-Rabbit IgG (H+L) at 1:5000. Lysates/proteins: 30ug per lane. Blocking buffer: 5% non-fat dry milk in TBST. Detection: ECL Enhanced Kit. Exposure time: 120s.



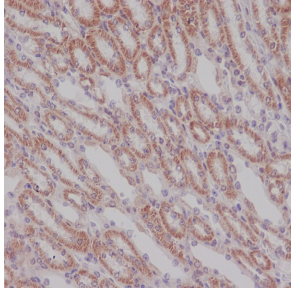
Immunohistochemical analysis of paraffin-embedded Human lung large cell cancer, using the Antibody at 1:500 dilution.



Immunohistochemical analysis of paraffin-embedded Human testis cancer, using the Antibody at 1:500 dilution.



Immunohistochemical analysis of paraffin-embedded Human breast cancer, using the Antibody at 1:500 dilution.



Immunohistochemical analysis of paraffin-embedded mouse kidney, using Smad3 Antibody.

实验步骤

访问官网浏览详情: www.ablybio.cn