

ER alpha Rabbit mAb

货号: **AYM28423**

产品信息

反应	Human,Mouse,Rat,Dog
宿主	Rabbit
克隆性	Monoclonal
预测反应	
应用	WB IHC IF/ICC CHIP FC
推荐浓度	WB: 1:500 - 1:2000 IHC: 1:50 - 1:200 IF/ICC: 1:50 - 1:200 FC: 1:20 - 1:50
理论分子量	35kDa/47kDa/53kDa/66kDa
实测分子量	60kDa
形式	Liquid
保存条件	Store at -20°C. Avoid freeze / thaw cycles. Buffer: PBS with 0.75% BSA,50% glycerol,pH7.3.
偶联物	Unconjugated
阳性对照	HeLa
细胞定位	Cell membrane,Cytoplasm,Cytoplasmic side,Cytoplasmic side,Golgi apparatus,Nucleus,Peripheral membrane protein,Single-pass type I membrane protein
纯化	Affinity purification

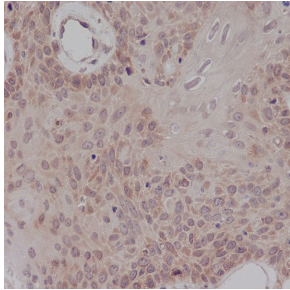
抗原信息

抗原信息	Recombinant fusion protein corresponding to Human ER alpha.
序列	HMSNKGMEHLYSMKCKNVVPLYDLLLEMLDAHRLHAPTSRGGASVEETDQSHLATAGSTSSHSLQKYYITGEAEGFPATV

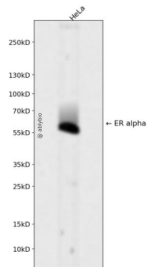
靶点信息

研究背景	This gene encodes an estrogen receptor, a ligand-activated transcription factor composed of several domains important for hormone binding, DNA binding, and activation of transcription. The protein localizes to the nucleus where it may form a homodimer or a heterodimer with estrogen receptor 2. Estrogen and its receptors are essential for sexual development and reproductive function, but also play a role in other tissues such as bone. Estrogen receptors are also involved in pathological processes including breast cancer, endometrial cancer, and osteoporosis. Alternative promoter usage and alternative splicing result in dozens of transcript variants, but the full-length nature of many of these variants has not been determined.
基因ID	2099
基因名	ESR1
Swiss	P03372
别名	ESR1;ER;ESR;ESRA;ESTRR;Era;NR3A1;ER alpha

产品验证



Immunohistochemical analysis of paraffin-embedded human cervix carcinoma, using ER alpha Antibody.



Western blot analysis of ER alpha expressed in HeLa using ER alpha Rabbit mAb at 1:1000. Secondary antibody: HRP Goat Anti-Rabbit IgG (H+L) at 1:5000. Lysates/proteins: 30ug per lane. Blocking buffer: 5% non-fat dry milk in TBST. Detection: ECL Enhanced Kit. Exposure time: 120s.

实验步骤

访问官网浏览详情: www.ablybio.cn