

ERK2 Rabbit mAb

货号: **AYM28422**

产品信息

反应	Human,Mouse,Rat
宿主	Rabbit
克隆性	Monoclonal
预测反应	
应用	WB IHC ICC IP FC
推荐浓度	WB: 1:500 - 1:2000 IHC: 1:50 - 1:200 ICC: 1:50 - 1:200 IP: 1:20 - 1:50 FC: 1:20 - 1:50
理论分子量	36kDa/41kDa
实测分子量	41kDa
形式	Liquid
保存条件	Store at -20°C. Avoid freeze / thaw cycles. Buffer: PBS with 0.75% BSA,50% glycerol,pH7.3.
偶联物	Unconjugated
阳性对照	HeLa,A-549,NIH/3T3,C6,Mouse brain,Mouse thymus,Rat brain
细胞定位	Cytoplasm,Nucleus,centrosome,cytoskeleton,microtubule organizing center,spindle
纯化	Affinity purification

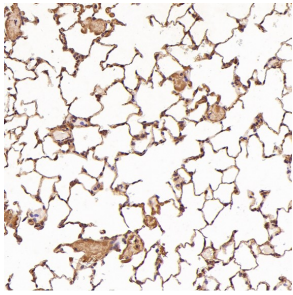
抗原信息

抗原信息	Recombinant fusion protein corresponding to Human ERK2.
序列	LNSKGYTKSIDIWSVGCILAEMLSNRPIFPGKHYLDQLNHILGILGSPSQEDLNCIINLKARNYLLSLPHKNKVPWNRLFPNA DSKALDLLDKMLTFNPHK

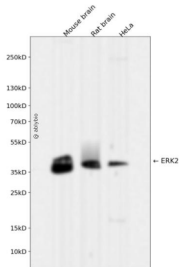
靶点信息

研究背景	This gene encodes a member of the MAP kinase family. MAP kinases, also known as extracellular signal-regulated kinases (ERKs), act as an integration point for multiple biochemical signals, and are involved in a wide variety of cellular processes such as proliferation, differentiation, transcription regulation and development. The activation of this kinase requires its phosphorylation by upstream kinases. Upon activation, this kinase translocates to the nucleus of the stimulated cells, where it phosphorylates nuclear targets. One study also suggests that this protein acts as a transcriptional repressor independent of its kinase activity. The encoded protein has been identified as a moonlighting protein based on its ability to perform mechanistically distinct functions. Two alternatively spliced transcript variants encoding the same protein, but differing in the UTRs, have been reported for this gene.
基因ID	5594
基因名	MAPK1
Swiss	P28482
别名	ERK;ERK-2;ERK2;ERT1;MAPK2;P42MAPK;PRKM1;PRKM2;p38;p40;p41;p41mapk;p42-MAPK;MAPK1

产品验证



Immunohistochemical analysis of paraffin-embedded Rat lung, using the Antibody at 1:100 dilution.



Western blot analysis of ERK2 expressed in Mouse brain, Rat brain, HeLa using ERK2 Rabbit mAb at 1:1000. Secondary antibody: HRP Goat Anti-Rabbit IgG (H+L) at 1:5000. Lysates/proteins: 30 ug per lane. Blocking buffer: 5% non-fat dry milk in TBST. Detection: ECL Enhanced Kit. Exposure time: 120s.

实验步骤

访问官网浏览详情: www.ablybio.cn