

Caveolin-1 Rabbit mAb

货号: **AYM28420**

产品信息

反应	Human,Mouse,Rat
宿主	Rabbit
克隆性	Monoclonal
预测反应	
应用	WB IHC IF/ICC FC
推荐浓度	WB: 1:500 - 1:2000 IHC: 1:50 - 1:200 IF/ICC: 1:50 - 1:200 FC: 1:20 - 1:50
理论分子量	17kDa/20kDa
实测分子量	20kDa
形式	Liquid
保存条件	Store at -20°C. Avoid freeze / thaw cycles. Buffer: PBS with 0.75% BSA,50% glycerol,pH7.3.
偶联物	Unconjugated
阳性对照	HeLa,A-549,Mouse lung,Mouse heart,Rat lung
细胞定位	Cell membrane,Golgi apparatus membrane,Membrane,Membrane raft,Peripheral membrane protein,cave ola
纯化	Affinity purification

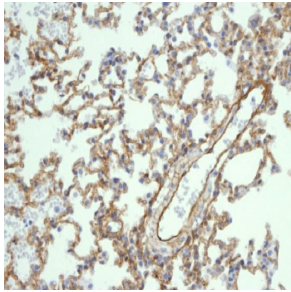
抗原信息

抗原信息	Recombinant fusion protein corresponding to Human Caveolin-1.
序列	MSGGKYVDSEGHLYTVPIREQGNIYKPNKAMADELSEKQVYDAHTKEIDLVNRPKHLNDDVVKIDFEDVIAEPEGTHSF DGIWKASFTTFTVTKYWFY

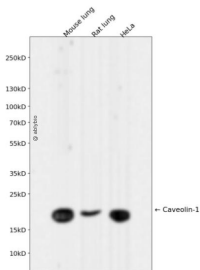
靶点信息

研究背景	The scaffolding protein encoded by this gene is the main component of the caveolae plasma membranes found in most cell types. The protein links integrin subunits to the tyrosine kinase FYN, an initiating step in coupling integrins to the Ras-ERK pathway and promoting cell cycle progression. The gene is a tumor suppressor gene candidate and a negative regulator of the Ras-p42/44 mitogen-activated kinase cascade. Caveolin 1 and caveolin 2 are located next to each other on chromosome 7 and express colocalizing proteins that form a stable hetero-oligomeric complex. Mutations in this gene have been associated with Berardinelli-Seip congenital lipodystrophy. Alternatively spliced transcripts encode alpha and beta isoforms of caveolin 1.
基因ID	857
基因名	CAV1
Swiss	Q03135
别名	BSCL3;CGL3;LCCNS;MSTP085;PPH3;VIP21;CAV1

产品验证



Immunohistochemical analysis of paraffin-embedded mouse lung, using Caveolin-1 Antibody.



Western blot analysis of Caveolin-1 expressed in Mouse lung, Rat lung, HeLa using Caveolin-1 Rabbit mAb at 1:1000. Secondary antibody: HRP Goat Anti-Rabbit IgG (H+L) at 1:5000. Lysates/proteins: 30ug per lane. Blocking buffer: 5% non-fat dry milk in TBST. Detection: ECL Enhanced Kit. Exposure time: 120s.

实验步骤

访问官网浏览详情: www.ablybio.cn