

# Chk1 Rabbit mAb

货号: **AYM28409**

## 产品信息

|       |   |
|-------|---|
| 反应    | Human,Mouse,Rat   |
| 宿主    | Rabbit  |
| 克隆性   | Monoclonal  |
| 预测反应  |   |
| 应用    | WB ICC IP   |
| 推荐浓度  | <b>WB:</b> 1:500 - 1:2000<br><b>ICC:</b> 1:50 - 1:200<br><b>IP:</b> 1:20 - 1:50               |
| 理论分子量 | 43kDa/50kDa/54kDa   |
| 实测分子量 | 54kDa   |
| 形式    | Liquid  |
| 保存条件  | Store at -20°C. Avoid freeze / thaw cycles.<br>Buffer: PBS with 0.75% BSA,50% glycerol,pH7.3. |
| 偶联物   | Unconjugated  |
| 阳性对照  | HT-29,HepG2,C6  |
| 细胞定位  | Cytoplasm,Nucleus,centrosome,cytoskeleton,microtubule organizing center                       |
| 纯化    | Affinity purification   |

## 抗原信息

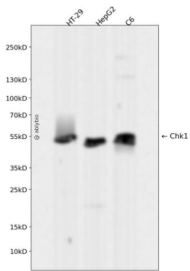
|      |   |
|------|---|
| 抗原信息 | Recombinant fusion protein corresponding to Human Chk1. |
| 序列   | SFSQP   |

## 靶点信息

|      |   |
|------|---|
| 研究背景 | The protein encoded by this gene belongs to the Ser/Thr protein kinase family. It is required for checkpoint mediated cell cycle arrest in response to DNA damage or the presence of unreplicated DNA. This protein acts to integrate signals from ATM and ATR, two cell cycle proteins involved in DNA damage responses, th at also associate with chromatin in meiotic prophase I. Phosphorylation of CDC25A protein phosphatase b y this protein is required for cells to delay cell cycle progression in response to double-strand DNA breaks. Several alternatively spliced transcript variants have been found for this gene. |
|------|---|

|       |            |
|-------|------------|
| 基因ID  | 1111       |
| 基因名   | CHEK1      |
| Swiss | O14757     |
| 别名    | CHEK1;CHK1 |

## 产品验证



Western blot analysis of Chk1 expressed in HT-29,HepG2,C6 using Chk1 Rabbit mAb at 1:1000. Second ary antibody: HRP Goat Anti-Rabbit IgG (H+L) at 1:5000. Lysates/proteins: 30ug per lane. Blocking buff er: 5% non-fat dry milk in TBST. Detection: ECL Enhanced Kit. Exposure time: 120s.

## 实验步骤

访问官网浏览详情: [www.ablybio.cn](http://www.ablybio.cn)