

TGFBI Rabbit mAb

货号: **AYM28400**

产品信息

反应	Human,Mouse,Rat
宿主	Rabbit
克隆性	Monoclonal
预测反应	
应用	WB IHC IF/ICC
推荐浓度	WB: 1:500 - 1:2000 IHC: 1:50 - 1:200 IF/ICC: 1:50 - 1:200
理论分子量	74kDa
实测分子量	68kDa
形式	Liquid
保存条件	Store at -20°C. Avoid freeze / thaw cycles. Buffer: PBS with 0.75% BSA,50% glycerol,pH7.3.
偶联物	Unconjugated
阳性对照	Mouse liver,Mouse kidney,Mouse heart,Rat liver,Rat thymus
细胞定位	Secreted,extracellular matrix,extracellular space
纯化	Affinity purification

抗原信息

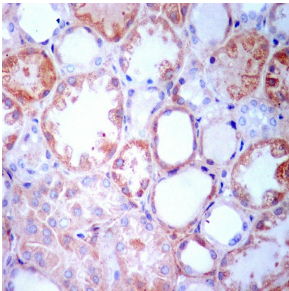
抗原信息	Recombinant fusion protein corresponding to Human TGFBI.
序列	LPPRERSRLLGDAKELANILKYHIGDEILVSGGIGALVRLKSLQGDKLEVSLKNNVSVNKEPVAEPDIMATNGVVHVITNVL QPPANRPQERGDELADSA

靶点信息

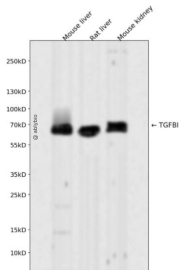
研究背景	This gene encodes an RGD-containing protein that binds to type I, II and IV collagens. The RGD motif is found in many extracellular matrix proteins modulating cell adhesion and serves as a ligand recognition sequence for several integrins. This protein plays a role in cell-collagen interactions and may be involved in endochondrial bone formation in cartilage. The protein is induced by transforming growth factor-beta and acts to inhibit cell adhesion. Mutations in this gene are associated with multiple types of corneal dystrophy.
------	--

基因ID	7045
基因名	TGFBI
Swiss	Q15582
别名	TGFBI;BIGH3;CDB1;CDG2;CDGG1;CSD;CSD1;CSD2;CSD3;EBMD;LCD1

产品验证



Immunohistochemical analysis of paraffin-embedded human kidney, using TGFBI Antibody.



Western blot analysis of TGFBI, using TGFBI Rabbit mAb at 1:1000. Secondary antibody: HRP Goat Anti-Rabbit IgG (H+L) at 1:5000. Lysates/proteins: 30ug per lane. Blocking buffer: 5% non-fat dry milk in TBST. Detection: ECL Enhanced Kit. Exposure time: 120s.

实验步骤

访问官网浏览详情: www.ablybio.cn