

IGF-I receptor beta (YD12231) Rabbit mAb

货号: **AYD16672**

产品信息

反应	Human, Mouse, Rat
宿主	Rabbit
克隆性	Monoclonal
预测反应	
应用	WB ICC/IF FC IP
推荐浓度	
理论分子量	155kDa
实测分子量	
形式	Liquid
保存条件	Store at -20°C. Avoid freeze / thaw cycles. Buffer: PBS with 0.75% BSA,50% glycerol,pH7.3.
偶联物	Unconjugated
阳性对照	293T,HeLa,A375
细胞定位	Cell membrane
纯化	

抗原信息

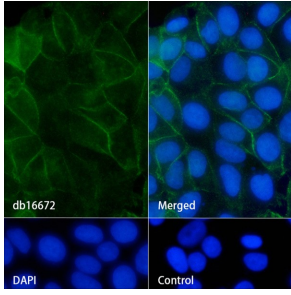
抗原信息	
------	--

靶点信息

研究背景	This receptor binds insulin-like growth factor with a high affinity. It has tyrosine kinase activity. The insulin-like growth factor I receptor plays a critical role in transformation events. Cleavage of the precursor generates alpha and beta subunits. It is highly overexpressed in most malignant tissues where it functions as an anti-apoptotic agent by enhancing cell survival. Alternatively spliced transcript variants encoding distinct isoforms have been found for this gene.
基因ID	3480
基因名	IGF1R
Swiss	P08069

别名	IGF-I receptor beta (YD12231)
----	-------------------------------

产品验证



实验步骤

访问官网浏览详情: www.ablybio.cn