

VPS26A (YD36275) Rabbit mAb

货号: **AYD16510**

产品信息

反应	Human, Mouse, Rat
宿主	Rabbit
克隆性	Monoclonal
预测反应	
应用	WB ICC/IF IP
推荐浓度	
理论分子量	38kDa
实测分子量	
形式	Liquid
保存条件	Store at -20°C. Avoid freeze / thaw cycles. Buffer: PBS with 0.75% BSA,50% glycerol,pH7.3.
偶联物	Unconjugated
阳性对照	U-937,Mouse testis,Rat testis
细胞定位	Cytoplasm, Endosome membrane, Early endosome
纯化	

抗原信息

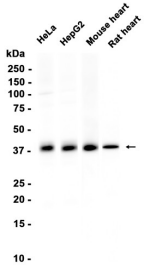
抗原信息	
------	--

靶点信息

研究背景	This gene belongs to a group of vacuolar protein sorting (VPS) genes. The encoded protein is a component of a large multimeric complex, termed the retromer complex, involved in retrograde transport of proteins from endosomes to the trans-Golgi network. The close structural similarity between the yeast and human proteins that make up this complex suggests a similarity in function. Expression studies in yeast and mammalian cells indicate that this protein interacts directly with VPS35, which serves as the core of the retromer complex. Alternative splicing results in multiple transcript variants encoding different isoforms.
基因ID	9559
基因名	VPS26A

Swiss	O75436
别名	VPS26A (YD36275)

产品验证



实验步骤

访问官网浏览详情: www.ablybio.cn