

TIMM22 (YD36257) Rabbit mAb

货号: **AYD16492**

产品信息

反应	Human, Mouse, Rat
宿主	Rabbit
克隆性	Monoclonal
预测反应	
应用	WB
推荐浓度	
理论分子量	20kDa
实测分子量	
形式	Liquid
保存条件	Store at -20°C. Avoid freeze / thaw cycles. Buffer: PBS with 0.75% BSA,50% glycerol,pH7.3.
偶联物	Unconjugated
阳性对照	
细胞定位	Mitochondrion inner membrane
纯化	

抗原信息

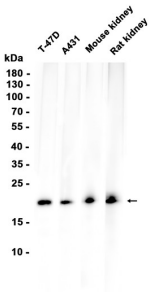
抗原信息	
------	--

靶点信息

研究背景	Essential core component of the TIM22 complex, a complex that mediates the import and insertion of multi-pass transmembrane proteins into the mitochondrial inner membrane. In the TIM22 complex, it constitutes the voltage-activated and signal-gated channel. Forms a twin-pore translocase that uses the membrane potential as external driving force in 2 voltage-dependent steps (By similarity)
基因ID	29928
基因名	TIMM22
Swiss	Q9Y584

别名	TIMM22 (YD36257)
----	------------------

产品验证



实验步骤

访问官网浏览详情: www.ablybio.cn