

# RALA (YD36220) Rabbit mAb

货号: **AYD16455**

## 产品信息

反应	Human
宿主	Rabbit
克隆性	Monoclonal
预测反应	
应用	WB IHC-P FC
推荐浓度	
理论分子量	24kDa
实测分子量	
形式	Liquid
保存条件	Store at -20°C. Avoid freeze / thaw cycles. Buffer: PBS with 0.75% BSA,50% glycerol,pH7.3.
偶联物	Unconjugated
阳性对照	A-549,HT-29,Mouse lung,Rat ovary
细胞定位	Cell membrane, Cleavage furrow, Midbody, Midbody ring, Mitochondrion
纯化	

## 抗原信息

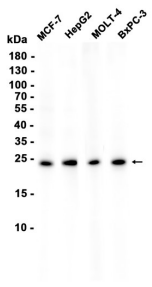
抗原信息	
------	--

## 靶点信息

研究背景	The product of this gene belongs to the small GTPase superfamily, Ras family of proteins. GTP-binding proteins mediate the transmembrane signaling initiated by the occupancy of certain cell surface receptors. This gene encodes a low molecular mass ras-like GTP-binding protein that shares about 50% similarity with other ras proteins.
基因ID	5898
基因名	RALA
Swiss	P11233

别名	RALA (YD36220)
----	----------------

## 产品验证



## 实验步骤

访问官网浏览详情: [www.ablybio.cn](http://www.ablybio.cn)