

# MAD2L1 (YD36159) Rabbit mAb

货号: **AYD16394**

## 产品信息

反应	Human
宿主	Rabbit
克隆性	Monoclonal
预测反应	
应用	WB
推荐浓度	
理论分子量	24kDa
实测分子量	
形式	Liquid
保存条件	Store at -20°C. Avoid freeze / thaw cycles. Buffer: PBS with 0.75% BSA,50% glycerol,pH7.3.
偶联物	Unconjugated
阳性对照	Daudi cells, HeLa cells, HEK-293 cells, rat liver tissue
细胞定位	Nucleus, Chromosome, centromere, kinetochore, Cytoplasm, cytoskeleton, spindle pole
纯化	

## 抗原信息

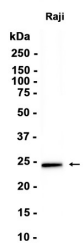
抗原信息	
------	--

## 靶点信息

研究背景	MAD2L1 is a component of the mitotic spindle assembly checkpoint that prevents the onset of anaphase until all chromosomes are properly aligned at the metaphase plate. MAD2L1 is related to the MAD2L2 gene located on chromosome 1. A MAD2 pseudogene has been mapped to chromosome 14.
基因ID	4085
基因名	MAD2L1
Swiss	Q13257
别名	MAD2L1 (YD36159)

## 产品验证

---



## 实验步骤

访问官网浏览详情: [www.ablybio.cn](http://www.ablybio.cn)