

LPP (YD36156) Rabbit mAb

货号: **AYD16391**

产品信息

反应	Human, Mouse, Rat
宿主	Rabbit
克隆性	Monoclonal
预测反应	
应用	WB IHC-P
推荐浓度	
理论分子量	66kDa
实测分子量	
形式	Liquid
保存条件	Store at -20°C. Avoid freeze / thaw cycles. Buffer: PBS with 0.75% BSA,50% glycerol,pH7.3.
偶联物	Unconjugated
阳性对照	HeLa,HepG2,NIH/3T3,Mouse lung
细胞定位	Nucleus, Cytoplasm, Cell junction, Cell membrane
纯化	

抗原信息

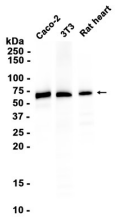
抗原信息	
------	--

靶点信息

研究背景	This gene encodes a member of a subfamily of LIM domain proteins that are characterized by an N-terminal proline-rich region and three C-terminal LIM domains. The encoded protein localizes to the cell periphery in focal adhesions and may be involved in cell-cell adhesion and cell motility. This protein also shuttles through the nucleus and may function as a transcriptional co-activator. This gene is located at the junction of certain disease-related chromosomal translocations, which result in the expression of chimeric proteins that may promote tumor growth. Alternative splicing results in multiple transcript variants.
基因ID	4026
基因名	LPP

Swiss	Q93052
别名	LPP (YD36156)

产品验证



实验步骤

访问官网浏览详情: www.ablybio.cn