

AP1G1 (YD36110) Rabbit mAb

货号: **AYD16345**

产品信息

反应	Human, Mouse, Rat
宿主	Rabbit
克隆性	Monoclonal
预测反应	
应用	WB IHC-P
推荐浓度	
理论分子量	91kDa
实测分子量	
形式	Liquid
保存条件	Store at -20°C. Avoid freeze / thaw cycles. Buffer: PBS with 0.75% BSA,50% glycerol,pH7.3.
偶联物	Unconjugated
阳性对照	Mouse brain
细胞定位	Golgi apparatus, Cytoplasmic vesicle, clathrin-coated vesicle membrane, Cytoplasm, perinuclear region, clathrin-coated vesicle, Membrane, clathrin-coated pit
纯化	

抗原信息

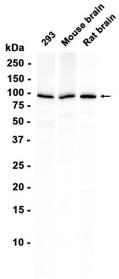
抗原信息	
------	--

靶点信息

研究背景	Adaptins are important components of clathrin-coated vesicles transporting ligand-receptor complexes from the plasma membrane or from the trans-Golgi network to lysosomes. The adaptin family of proteins is composed of four classes of molecules named alpha, beta-, beta prime- and gamma- adaptins. Adaptins, together with medium and small subunits, form a heterotetrameric complex called an adaptor, whose role is to promote the formation of clathrin-coated pits and vesicles. The protein encoded by this gene is a gamma-adaptin protein and it belongs to the adaptor complexes large subunits family. Two transcript variants encoding different isoforms have been found for this gene.
基因ID	164

基因名	AP1G1
Swiss	O43747
别名	AP1G1 (YD36110)

产品验证



实验步骤

访问官网浏览详情: www.ablybio.cn