

AP2A1 (YD36035) Rabbit mAb

货号: **AYD16270**

产品信息

反应	Human, Mouse, Rat
宿主	Rabbit
克隆性	Monoclonal
预测反应	
应用	WB IHC-P FC
推荐浓度	
理论分子量	108kDa
实测分子量	
形式	Liquid
保存条件	Store at -20°C. Avoid freeze / thaw cycles. Buffer: PBS with 0.75% BSA,50% glycerol,pH7.3.
偶联物	Unconjugated
阳性对照	THP-1,HeLa,Rat liver,Rat lung
细胞定位	Cell membrane, Membrane, coated pit
纯化	

抗原信息

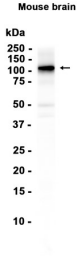
抗原信息	
------	--

靶点信息

研究背景	This gene encodes the alpha 1 adaptin subunit of the adaptor protein 2 (AP-2) complex found in clathrin coated vesicles. The AP-2 complex is a heterotetramer consisting of two large adaptins (alpha or beta), a medium adaptin (mu), and a small adaptin (sigma). The complex is part of the protein coat on the cytoplasmic face of coated vesicles which links clathrin to receptors in vesicles. Alternative splicing of this gene results in two transcript variants encoding two different isoforms. A third transcript variant has been described, but its full length nature has not been determined.
基因ID	160
基因名	AP2A1

Swiss	O95782
别名	AP2A1 (YD36035)

产品验证



实验步骤

访问官网浏览详情: www.ablybio.cn