

SUFU (YD35338) Rabbit mAb

货号: **AYD16085**

产品信息

反应	Human,Mouse,Rat
宿主	Rabbit
克隆性	Monoclonal
预测反应	
应用	WB FC
推荐浓度	
理论分子量	54kDa
实测分子量	
形式	Liquid
保存条件	Store at -20°C. Avoid freeze / thaw cycles. Buffer: PBS with 0.75% BSA,50% glycerol,pH7.3.
偶联物	Unconjugated
阳性对照	C6,PC-12
细胞定位	Cytoplasm, Nucleus
纯化	

抗原信息

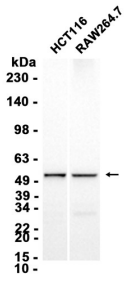
抗原信息	
------	--

靶点信息

研究背景	The Hedgehog signaling pathway plays an important role in early human development. The pathway is a signaling cascade that plays a role in pattern formation and cellular proliferation during development. This gene encodes a negative regulator of the hedgehog signaling pathway. Defects in this gene are a cause of medulloblastoma. Alternative splicing results in multiple transcript variants.
基因ID	51684
基因名	SUFU
Swiss	Q9UMX1

别名	SUFU (YD35338)
----	----------------

产品验证



实验步骤

访问官网浏览详情: www.ablybio.cn