

# Cathepsin D (YD11135) Rabbit mAb

货号: **AYD16072**

## 产品信息

|       |   |
|-------|---|
| 反应    | Human   |
| 宿主    | Rabbit  |
| 克隆性   | Monoclonal  |
| 预测反应  |   |
| 应用    | WB IHC ICC/IF FC  |
| 推荐浓度  |   |
| 理论分子量 | 45kDa   |
| 实测分子量 |   |
| 形式    | Liquid  |
| 保存条件  | Store at -20°C. Avoid freeze / thaw cycles.<br>Buffer: PBS with 0.75% BSA,50% glycerol,pH7.3. |
| 偶联物   | Unconjugated  |
| 阳性对照  | SK-BR-3,Rat lung  |
| 细胞定位  | Lysosome, Melanosome, Secreted, extracellular space   |
| 纯化    |   |

## 抗原信息

|      |  |
|------|--|
| 抗原信息 |  |
|------|--|

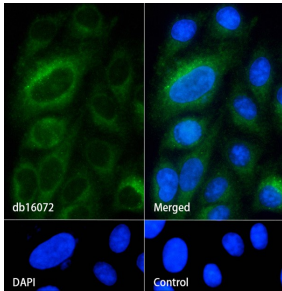
## 靶点信息

|      |  |
|------|--|
| 研究背景 | This gene encodes a member of the A1 family of peptidases. The encoded preproprotein is proteolytically processed to generate multiple protein products. These products include the cathepsin D light and heavy chains, which heterodimerize to form the mature enzyme. This enzyme exhibits pepsin-like activity and plays a role in protein turnover and in the proteolytic activation of hormones and growth factors. Mutations in this gene play a causal role in neuronal ceroid lipofuscinosis-10 and may be involved in the pathogenesis of several other diseases, including breast cancer and possibly Alzheimer's disease. |
| 基因ID | 1509   |
| 基因名  | CTSD   |

|       |                       |
|-------|-----------------------|
| Swiss | P07339                |
| 别名    | Cathepsin D (YD11135) |

## 产品验证

MCF-7  
kDa  
250 -  
150 -  
100 -  
75 -  
50 -  
37 -  
25 -  
20 -  
15 -  
10 -



## 实验步骤

访问官网浏览详情: [www.ablybio.cn](http://www.ablybio.cn)