

# EEF2 (YD11212) Rabbit mAb

货号: **AYD16053**

## 产品信息

反应	Human,Mouse,Rat
宿主	Rabbit
克隆性	Monoclonal
预测反应	
应用	WB IHC-P
推荐浓度	
理论分子量	95kDa
实测分子量	
形式	Liquid
保存条件	Store at -20°C. Avoid freeze / thaw cycles. Buffer: PBS with 0.75% BSA,50% glycerol,pH7.3.
偶联物	Unconjugated
阳性对照	HeLa,NCI-H460,293T
细胞定位	Cytoplasm, Nucleus
纯化	

## 抗原信息

抗原信息	
------	--

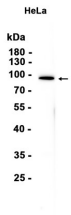
## 靶点信息

研究背景	This gene encodes a member of the GTP-binding translation elongation factor family. This protein is an essential factor for protein synthesis. It promotes the GTP-dependent translocation of the nascent protein c hain from the A-site to the P-site of the ribosome. This protein is completely inactivated by EF-2 kinase phosphorylation.
基因ID	1938
基因名	EEF2
Swiss	P13639

别名	EEF2 (YD11212)
----	----------------

## 产品验证

---



## 实验步骤

访问官网浏览详情: [www.ablybio.cn](http://www.ablybio.cn)