

IL-2 Receptor alpha (YD11308) Rabbit mAb

货号: **AYD16024**

产品信息

反应	Human
宿主	Rabbit
克隆性	Monoclonal
预测反应	
应用	IHC-P ICC/IF
推荐浓度	
理论分子量	31kDa
实测分子量	
形式	Liquid
保存条件	Store at -20°C. Avoid freeze / thaw cycles. Buffer: PBS with 0.75% BSA,50% glycerol,pH7.3.
偶联物	Unconjugated
阳性对照	Rat spleen,Rat lung
细胞定位	Membrane
纯化	

抗原信息

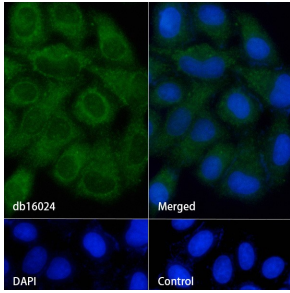
抗原信息	
------	--

靶点信息

研究背景	The interleukin 2 (IL2) receptor alpha (IL2RA) and beta (IL2RB) chains, together with the common gamma chain (IL2RG), constitute the high-affinity IL2 receptor. Homodimeric alpha chains (IL2RA) result in low-affinity receptor, while homodimeric beta (IL2RB) chains produce a medium-affinity receptor. Normally an integral-membrane protein, soluble IL2RA has been isolated and determined to result from extracellular proteolysis. Alternately-spliced IL2RA mRNAs have been isolated, but the significance of each is presently unknown. Mutations in this gene are associated with interleukin 2 receptor alpha deficiency.
基因ID	3559
基因名	IL2RA

Swiss	P01589
别名	IL-2 Receptor alpha (YD11308)

产品验证



实验步骤

访问官网浏览详情: www.ablybio.cn