

GDF15 (YD11326) Rabbit mAb

货号: **AYD16020**

产品信息

反应	Human
宿主	Rabbit
克隆性	Monoclonal
预测反应	
应用	WB IHC-P IP
推荐浓度	
理论分子量	34kDa
实测分子量	
形式	Liquid
保存条件	Store at -20°C. Avoid freeze / thaw cycles. Buffer: PBS with 0.75% BSA,50% glycerol,pH7.3.
偶联物	Unconjugated
阳性对照	PC-3,HT-1080
细胞定位	Secreted
纯化	

抗原信息

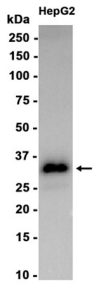
抗原信息	
------	--

靶点信息

研究背景	The protein encoded by this gene belongs to the transforming growth factor-beta (TGF-beta) family. The protein is expressed in a broad range of cell types, acts as a pleiotropic cytokine and is involved in the stress response program of cells after cellular injury. Increased protein levels are associated with disease states such as tissue hypoxia, inflammation, acute injury and oxidative stress.
基因ID	9518
基因名	GDF15
Swiss	Q99988

别名	GDF15 (YD11326)
----	-----------------

产品验证



实验步骤

访问官网浏览详情: www.ablybio.cn